

For Research Use Only

CCL28 Polyclonal antibody

Catalog Number: 18214-1-AP **5 Publications**



Basic Information

Catalog Number: 18214-1-AP	GenBank Accession Number: BC069532	Purification Method: Antigen affinity purification
Size: 400 µg/ml	GeneID (NCBI): 56477	Recommended Dilutions: WB 1:500-1:1000 IHC 1:50-1:500
Source: Rabbit	UNIPROT ID: Q9NRJ3	
Isotype: IgG	Full Name: chemokine (C-C motif) ligand 28	
Immunogen Catalog Number: AG12920	Calculated MW: 127 aa, 14 kDa	
	Observed MW: 8 kDa-9 kDa	

Applications

Tested Applications: FC, IHC, WB, ELISA	Positive Controls: WB : human spleen tissue, Jurkat cells, mouse spleen tissue, PC-3 cells IHC : human colon cancer tissue,
Cited Applications: IF, IHC, WB	
Species Specificity: human, mouse	
Cited Species: human, rat, mouse	
Note-IHC: suggested antigen retrieval with TE buffer pH 9.0; (*) Alternatively, antigen retrieval may be performed with citrate buffer pH 6.0	

Background Information

CCL28, also named as SCYA28, CCK1 and MEC, belongs to the intercrine beta (chemokine CC) family. It has chemotactic activity for resting CD4, CD8 T-cells and eosinophils. CCL28 binds to CCR3 and CCR10 and induces calcium mobilization in a dose-dependent manner. CCL28 is expressed in a variety of human and mouse tissues, and it appears to be predominantly produced by epithelial cells. It is produced by epithelial cells of these tissues suggesting that this chemokine can play an important role by linking homing mechanisms between the gut, nasal mucosa and mammary gland (MG). In WB test, CCL28 is 14kd and 8-9kd (a putatively to a degradation fragment).

Notable Publications

Author	Pubmed ID	Journal	Application
Tianming Li	36461593	Int Immunopharmacol	IHC, WB
Xiao Li Yang	28713975	Oncol Rep	WB
Tara Karnezis	30709930	Cancer Res	IHC, IF

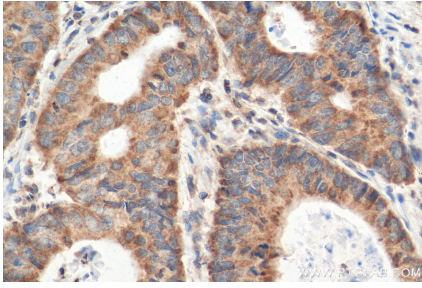
Storage

Storage:
Store at -20°C. Stable for one year after shipment.
Storage Buffer:
PBS with 0.02% sodium azide and 50% glycerol pH 7.3.
Aliquoting is unnecessary for -20°C storage

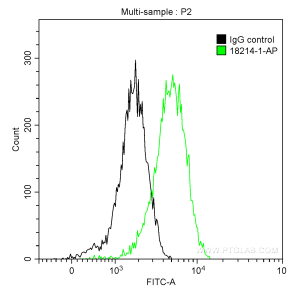
For technical support and original validation data for this product please contact:
T: 4006900926 E: Proteintech-CN@ptglab.com W: ptgcn.com

This product is exclusively available under Proteintech Group brand and is not available to purchase from any other manufacturer.

Selected Validation Data



Immunohistochemical analysis of paraffin-embedded human colon cancer tissue slide using 18214-1-AP (CCL28 antibody) at dilution of 1:200 (under 40x lens). Heat mediated antigen retrieval with Tris-EDTA buffer (pH 9.0).



1X10⁶ Jurkat cells were intracellularly stained with 0.5 ug Anti-Human CCL28 (18214-1-AP) and CoraLite®488-Conjugated AffiniPure Goat Anti-Rabbit IgG(H+L) at dilution 1:1000 (green), and 0.5 ug Control Antibody. Cells were fixed with 90% MeOH.



human spleen tissue were subjected to SDS PAGE followed by western blot with 18214-1-AP (CCL28 antibody) at dilution of 1:300 incubated at room temperature for 1.5 hours.