

For Research Use Only

GSR Polyclonal antibody

Catalog Number: 18257-1-AP

Featured Product

19 Publications



Basic Information

Catalog Number:

18257-1-AP

Size:

650 µg/ml

Source:

Rabbit

Isotype:

IgG

Immunogen Catalog Number:

AG13080

GenBank Accession Number:

BC069244

GeneID (NCBI):

2936

UNIPROT ID:

P00390

Full Name:

glutathione reductase

Calculated MW:

522 aa, 56 kDa

Observed MW:

52-55 kDa

Purification Method:

Antigen affinity purification

Recommended Dilutions:

WB 1:1000-1:4000

IP 0.5-4.0 µg for 1.0-3.0 mg of total protein lysate

IHC 1:200-1:800

IF 1:50-1:500

Applications

Tested Applications:

IF/ICC, IHC, IP, WB, ELISA

Cited Applications:

WB

Species Specificity:

human, mouse, rat

Cited Species:

human, rat, mouse

Note-IHC: suggested antigen retrieval with TE buffer pH 9.0; (*) Alternatively, antigen retrieval may be performed with citrate buffer pH 6.0

Positive Controls:

WB: Jurkat cells, HeLa cells, mouse lung tissue, human placenta tissue, mouse testis tissue, rat testis tissue

IP: HeLa cells,

IHC: human breast cancer tissue,

IF: HeLa cells,

Background Information

GSR (Glutathione reductase) is also named as GLUR, GRD1 and belongs to the class-I pyridine nucleotide-disulfide oxidoreductase family. It was first found in a black American variant red cell GSR characterized by greater electrophoretic mobility and enzyme activity per unit of hemoglobin than the normal. This protein maintains high levels of reduced glutathione in the cytosol. It has 5 isoforms produced by alternative splicing and alternative initiation. It can also exist as a homodimer with the molecular weight of 110 kDa (PMID:8631352). This antibody is specific to GSR.

Notable Publications

Author	Pubmed ID	Journal	Application
Lin-Yu Jin	36164394	Oxid Med Cell Longev	WB
Xiaohan Jin	36243112	J Biol Chem	WB
Zhi-Guo Zheng	27193186	Sci Rep	WB

Storage

Storage:

Store at -20°C. Stable for one year after shipment.

Storage Buffer:

PBS with 0.02% sodium azide and 50% glycerol pH 7.3.

Aliquoting is unnecessary for -20°C storage

For technical support and original validation data for this product please contact:

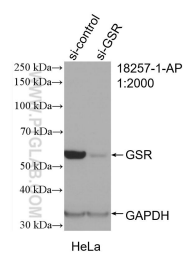
T: 4006900926

E: Proteintech-CN@ptglab.com

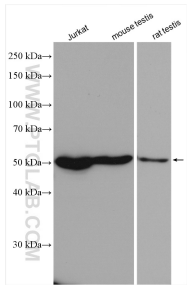
W: ptgcn.com

This product is exclusively available under Proteintech Group brand and is not available to purchase from any other manufacturer.

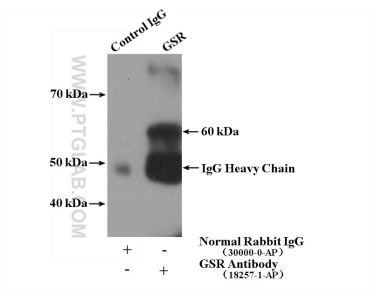
Selected Validation Data



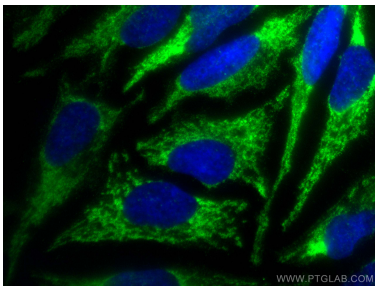
WB result of GSR antibody (18257-1-AP; 1:2000; incubated at room temperature for 1.5 hours) with sh-Control and sh-GSR transfected HeLa cells.



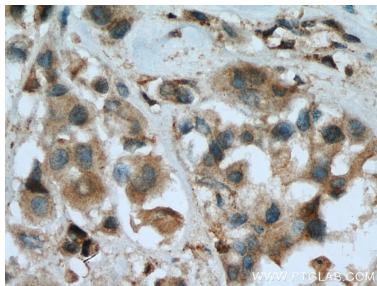
Various lysates were subjected to SDS PAGE followed by western blot with 18257-1-AP (GSR antibody) at dilution of 1:2000 incubated at room temperature for 1.5 hours.



IP result of anti-GSR (IP:18257-1-AP, 4ug; Detection:18257-1-AP 1:500) with HeLa cells lysate 2600ug.



Immunofluorescent analysis of (-20°C Ethanol) fixed HeLa cells using GSR antibody (18257-1-AP) at dilution of 1:200 and CoraLite®488-Conjugated AffiniPure Goat Anti-Rabbit IgG(H+L).



Immunohistochemical analysis of paraffin-embedded human breast cancer tissue slide using 18257-1-AP (GSR antibody) at dilution of 1:400 (under 40x lens). Heat mediated antigen retrieval with Tris-EDTA buffer (pH 9.0).