

For Research Use Only

HER2/ErbB2 Polyclonal antibody

Catalog Number: 18299-1-AP

Featured Product

57 Publications



Basic Information

Catalog Number:

18299-1-AP

Size:

700 µg/ml

Source:

Rabbit

Isotype:

IgG

GenBank Accession Number:

BC167147

GeneID (NCBI):

2064

UNIPROT ID:

P04626

Full Name:

v-erb-b2 erythroblastic leukemia viral oncogene homolog 2, neuro/glioblastoma derived oncogene homolog (avian)

Calculated MW:

138 kDa

Observed MW:

185 kDa

Purification Method:

Antigen affinity purification

Recommended Dilutions:

WB 1:2000-1:12000

IP 0.5-4.0 µg for 1.0-3.0 mg of total protein lysate

IHC 1:300-1:1200

IF 1:50-1:500

Applications

Tested Applications:

FC, IF/ICC, IHC, IP, WB, ELISA

Cited Applications:

FC, IF, IHC, WB

Species Specificity:

human, mouse

Cited Species:

human, rat, mouse

Positive Controls:

WB: 4T1 cells, SGC-7901 cells, MCF-7 cells, HeLa cells

IP: SGC-7901 cells,

IHC: human breast cancer tissue,

IF: human breast cancer tissue,

Note-IHC: suggested antigen retrieval with TE buffer pH 9.0; (*) Alternatively, antigen retrieval may be performed with citrate buffer pH 6.0

Background Information

HER2, also known as ErbB2 and Neu, is a 185-kDa transmembrane glycoprotein that is a member of the epidermal growth factor (EGF) receptor family of receptor tyrosine kinases. It has no ligand-binding domain of its own and therefore cannot bind growth factors. However, it does bind tightly to other ligand-bound EGF receptor family members to form a heterodimer, stabilizing ligand binding and enhancing kinase-mediated activation of downstream signalling pathways, such as those involving mitogen-activated protein kinase and phosphatidylinositol-3 kinase. Amplification and/or overexpression of HER2 have been reported in numerous cancers, including breast and ovarian tumors. HER2 is a therapeutic target for the treatment of breast cancer and other carcinomas. This antibody raised against a synthesized peptide corresponding to 1237-1255aa of human HER2 recognizes the 185-kDa full-length glycosylated form and other lower molecular-mass forms of HER2, including the truncated form.

Notable Publications

Author	Pubmed ID	Journal	Application
Samusi Adediran	36230550	Cancers (Basel)	WB
Zhirui Zhang	27658586	J Exp Clin Cancer Res	WB
Yangcenzi Xie	36069700	Anal Chem	WB,IF

Storage

Storage:

Store at -20°C. Stable for one year after shipment.

Storage Buffer:

PBS with 0.02% sodium azide and 50% glycerol pH 7.3.

Aliquoting is unnecessary for -20°C storage

For technical support and original validation data for this product please contact:

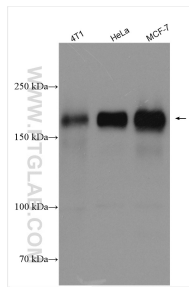
T: 4006900926

E: Proteintech-CN@ptglab.com

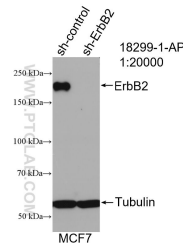
W: ptgcn.com

This product is exclusively available under Proteintech Group brand and is not available to purchase from any other manufacturer.

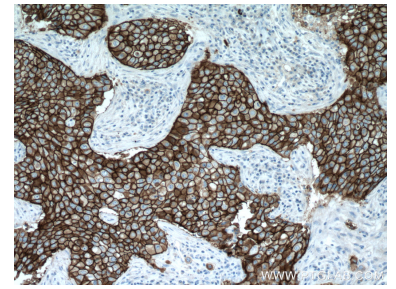
Selected Validation Data



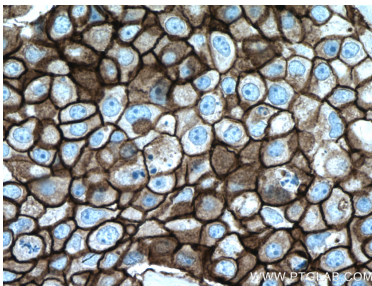
Various lysates were subjected to SDS PAGE followed by western blot with 18299-1-AP (HER2/ErbB2 antibody) at dilution of 1:6000 incubated at room temperature for 1.5 hours.



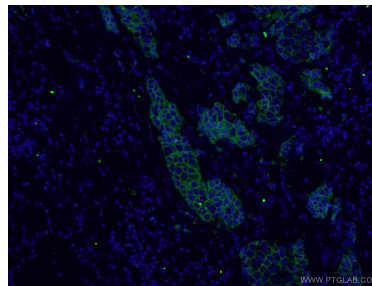
WB result of HER2/ErbB2 antibody (18299-1-AP; 1:20000; incubated at room temperature for 1.5 hours) with sh-Control and sh-HER2/ErbB2 transfected MCF-7 cells.



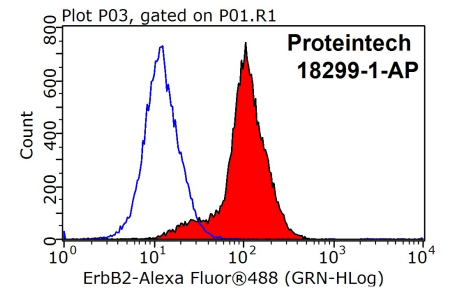
Immunohistochemical analysis of paraffin-embedded human breast cancer tissue slide using 18299-1-AP (HER2/ErbB2 antibody) at dilution of 1:600 (under 10x lens. Heat mediated antigen retrieval with Tris-EDTA buffer (pH 9.0).



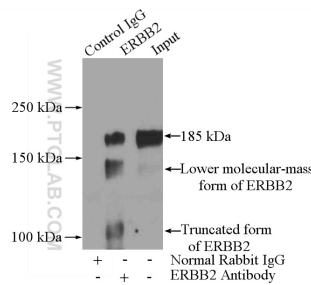
Immunohistochemical analysis of paraffin-embedded human breast cancer tissue slide using 18299-1-AP (HER2/ErbB2 antibody) at dilution of 1:600 (under 40x lens. Heat mediated antigen retrieval with Tris-EDTA buffer (pH 9.0).



Immunofluorescent analysis of (4% PFA) fixed human breast cancer tissue using 18299-1-AP (HER2/ErbB2 antibody) at dilution of 1:50 and Alexa Fluor 488-conjugated AffiniPure Goat Anti-Rabbit IgG(H+L).



1x10⁶ MCF-7 cells were stained with 0.2ug HER2/ErbB2 antibody (18299-1-AP, red) and control antibody (blue). Fixed with 90% MeOH blocked with 3% BSA (30 min). Alexa Fluor 488-conjugated AffiniPure Goat Anti-Rabbit IgG(H+L) with dilution 1:1000.



IP result of anti-HER2/ErbB2 (IP:18299-1-AP, 5ug; Detection:18299-1-AP 1:500) with SGC-7901 cells lysate 2400ug.