

For Research Use Only

# 1A6/DRIM Polyclonal antibody

Catalog Number: 18830-1-AP



## Basic Information

### Catalog Number:

18830-1-AP

### Size:

900 µg/ml

### Source:

Rabbit

### Isotype:

IgG

### GenBank Accession Number:

NM\_014503

### GeneID (NCBI):

27340

### UNIPROT ID:

O75691

### Full Name:

UTP20, small subunit (SSU)  
processome component, homolog  
(yeast)

### Calculated MW:

318 kDa

### Observed MW:

310 kDa

### Purification Method:

Antigen affinity purification

### Recommended Dilutions:

WB 1:500-1:2000

IP 0.5-4.0 µg for 1.0-3.0 mg of total  
protein lysate

IF 1:20-1:200

## Applications

### Tested Applications:

IF/ICC, IP, WB, ELISA

### Species Specificity:

human, mouse, rat

### Positive Controls:

WB : HeLa cells, HepG2 cells, mouse ovary tissue

IP : HeLa cells,

IF : HeLa cells,

## Background Information

UTP20, also named as DRIM, interacts with KIAA0649.

## Storage

### Storage:

Store at -20°C. Stable for one year after shipment.

### Storage Buffer:

PBS with 0.02% sodium azide and 50% glycerol pH 7.3.

Aliquoting is unnecessary for -20°C storage

For technical support and original validation data for this product please contact:

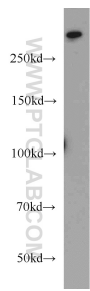
T: 4006900926

E: [Proteintech-CN@ptglab.com](mailto:Proteintech-CN@ptglab.com)

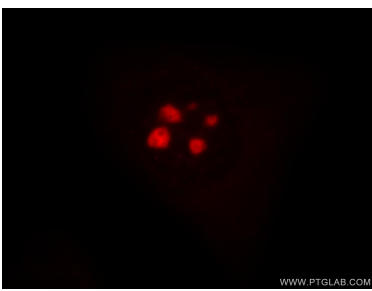
W: [ptgcn.com](http://ptgcn.com)

This product is exclusively available under Proteintech Group brand and is not available to purchase from any other manufacturer.

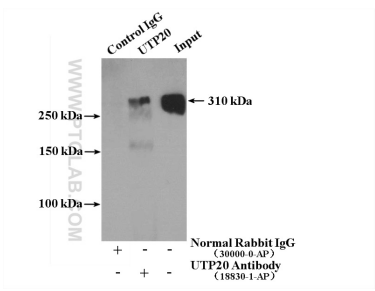
Selected Validation Data



HeLa cells were subjected to SDS PAGE followed by western blot with 18830-1-AP (1A6/DRIM antibody) at dilution of 1:1000 incubated at room temperature for 1.5 hours.



Immunofluorescent analysis of HeLa cells, using UTP20 antibody 18830-1-AP at 1:50 dilution and Rhodamine-labeled goat anti-rabbit IgG (red).



IP result of anti-1A6/DRIM (IP:18830-1-AP, 4ug; Detection:18830-1-AP 1:800) with HeLa cells lysate 4000ug.