

GOLPH3 Polyclonal antibody

Catalog Number: 19112-1-AP

Featured Product

21 Publications

Basic Information

Catalog Number:

19112-1-AP

Size:

500 µg/ml

Source:

Rabbit

Isotype:

IgG

Immunogen Catalog Number:

AG5443

GenBank Accession Number:

BC033725

GeneID (NCBI):

64083

UNIPROT ID:

Q9H4A6

Full Name:

golgi phosphoprotein 3 (coat-protein)

Calculated MW:

298 aa, 34 kDa

Observed MW:

34 kDa

Purification Method:

Antigen affinity purification

Recommended Dilutions:

WB 1:1000-1:4000

IP 0.5-4.0 µg for 1.0-3.0 mg of total protein lysate

IHC 1:50-1:500

IF 1:50-1:500

Applications

Tested Applications:

IF/ICC, IHC, IP, WB, ELISA

Cited Applications:

WB, IF, IHC, CoIP

Species Specificity:

human, mouse, rat

Cited Species:

human, mouse

Note-IHC: suggested antigen retrieval with TE buffer pH 9.0; (*) Alternatively, antigen retrieval may be performed with citrate buffer pH 6.0

Positive Controls:

WB: HeLa cells, mouse lung tissue, rat testis tissue, mouse testis tissue

IP: mouse testis tissue,

IHC: human colon cancer tissue, human placenta tissue, human colon tissue

IF: HepG2 cells,

Background Information

GOLPH3 (also called GPP34, GMx33, MIDAS, or yeast Vps74p) is a 34-kDa Golgi-associated protein conserved from yeast to human. GOLPH3 binds to PtdIns(4)P-rich trans-Golgi membranes and MYO18A conveying a tensile force required for efficient tubule and vesicle formation (PMID: 19837035). GOLPH3 has been recently demonstrated as a novel oncoprotein amplified in various types of human malignancies, including melanoma, breast, non-small cell lung cancer, gliomas and connective tissue tumors (PMID: 19553991; 23006319; 21499727; 22745132). Enhanced activation of mTOR signalling represents a molecular basis for the oncogenic activity of GOLPH3 (PMID: 19553991).

Notable Publications

Author	Pubmed ID	Journal	Application
Hua Xing X	23006319	Diagn Pathol	IHC
Jun-Wei Song	34671013	Cell Death Dis	WB
Qing Zhang	29187903	Theranostics	WB, IHC, IF

Storage

Storage:

Store at -20°C. Stable for one year after shipment.

Storage Buffer:

PBS with 0.02% sodium azide and 50% glycerol pH 7.3.

Aliquoting is unnecessary for -20°C storage

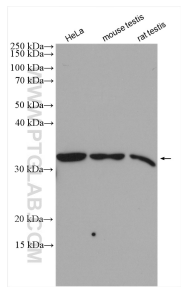
For technical support and original validation data for this product please contact:

T: 4006900926

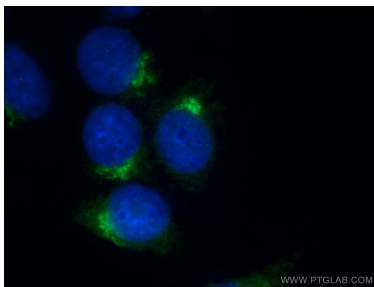
E: Proteintech-CN@ptglab.comW: ptgcn.com

This product is exclusively available under Proteintech Group brand and is not available to purchase from any other manufacturer.

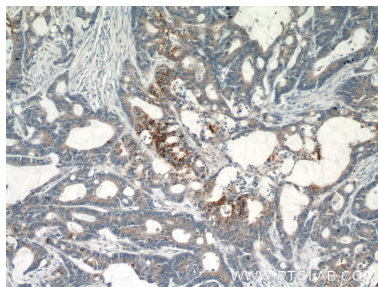
Selected Validation Data



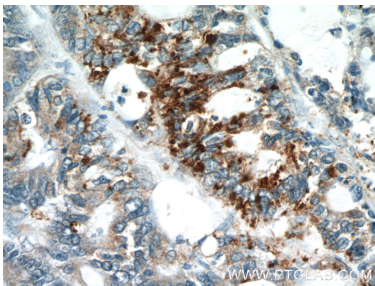
Various lysates were subjected to SDS PAGE followed by western blot with 19112-1-AP (GOLPH3 antibody) at dilution of 1:2000 incubated at room temperature for 1.5 hours.



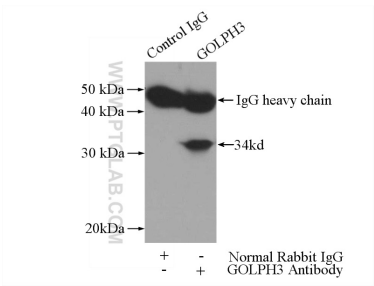
Immunofluorescent analysis of (-20℃ Ethanol) fixed HepG2 cells using 19112-1-AP (GOLPH3 antibody) at dilution of 1:50 and Alexa Fluor 488-conjugated AffiniPure Goat Anti-Rabbit IgG(H+L).



Immunohistochemical analysis of paraffin-embedded human colon cancer using 19112-1-AP (GOLPH3 antibody) at dilution of 1:50 (under 10x lens).



Immunohistochemical analysis of paraffin-embedded human colon cancer using 19112-1-AP (GOLPH3 antibody) at dilution of 1:50 (under 40x lens).



IP result of anti-GOLPH3 (IP:19112-1-AP, 3ug; Detection:19112-1-AP 1:1500) with mouse testis tissue lysate 4000ug.