

For Research Use Only

CLCA2 Polyclonal antibody

Catalog Number: 19273-1-AP **3 Publications**



Basic Information

Catalog Number: 19273-1-AP	GenBank Accession Number: BC041096	Purification Method: Antigen affinity purification
Size: 400 µg/ml	GeneID (NCBI): 9635	Recommended Dilutions: WB 1:500-1:1000 IHC 1:20-1:200
Source: Rabbit	UNIPROT ID: Q9UQC9	
Isotype: IgG	Full Name: chloride channel accessory 2	
Immunogen Catalog Number: AG5914	Calculated MW: 104 kDa	
	Observed MW: 141 kDa, 35-40 kDa	

Applications

Tested Applications: IHC, WB, ELISA	Positive Controls: WB : mouse lung tissue, COLO 320 cells IHC : human oesophagus tissue,
Cited Applications: IP, WB	
Species Specificity: human, mouse	
Cited Species: human, mouse	
Note-IHC: suggested antigen retrieval with TE buffer pH 9.0; (*) Alternatively, antigen retrieval may be performed with citrate buffer pH 6.0	

Background Information

Notable Publications

Author	Pubmed ID	Journal	Application
Tinghui Shao	34869368	Front Cell Dev Biol	WB, IP
Xinming Wang	34805326	Front Cardiovasc Med	WB
Grace T Ramena	38001916	Biomedicines	IP

Storage

Storage:
Store at -20°C. Stable for one year after shipment.
Storage Buffer:
PBS with 0.02% sodium azide and 50% glycerol pH 7.3.
Aliquoting is unnecessary for -20°C storage

For technical support and original validation data for this product please contact:

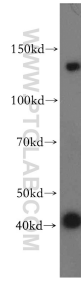
T: 4006900926

E: Proteintech-CN@ptglab.com

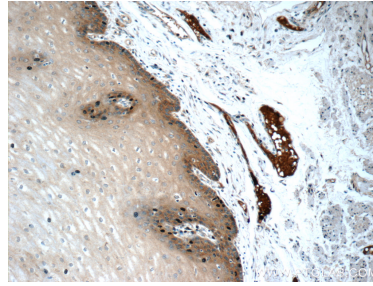
W: ptgcn.com

This product is exclusively available under Proteintech Group brand and is not available to purchase from any other manufacturer.

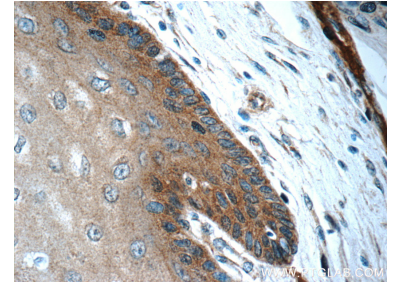
Selected Validation Data



mouse lung tissue were subjected to SDS PAGE followed by western blot with 19273-1-AP (CLCA2 antibody) at dilution of 1:300 incubated at room temperature for 1.5 hours.



Immunohistochemical analysis of paraffin-embedded human oesophagus tissue slide using 19273-1-AP (CLCA2 Antibody) at dilution of 1:50 (under 10x lens).



Immunohistochemical analysis of paraffin-embedded human oesophagus tissue slide using 19273-1-AP (CLCA2 Antibody) at dilution of 1:50 (under 40x lens).