

For Research Use Only

FOXL2-Specific Polyclonal antibody



Catalog Number: 19672-1-AP

Featured Product

7 Publications

Basic Information

Catalog Number:

19672-1-AP

Size:

260 µg/ml

Source:

Rabbit

Isotype:

IgG

GenBank Accession Number:

NM_023067

GeneID (NCBI):

668

UNIPROT ID:

P58012

Full Name:

forkhead box L2

Calculated MW:

39 kDa

Observed MW:

49 kDa

Purification Method:

Antigen affinity purification

Recommended Dilutions:

WB 1:500-1:2000

Applications

Tested Applications:

WB, ELISA

Cited Applications:

IF, IHC, WB

Species Specificity:

human, mouse, rat

Cited Species:

human, chicken, rat, mouse

Positive Controls:

WB : mouse ovary tissue, rat ovary tissue

Background Information

FOXL2 is probable a transcriptional regulator. It is required to maintain the female phenotype throughout adulthood, and may provide clues to female infertility. Defects in FOXL2 are a cause of blepharophimosis, ptosis, and epicanthus inversus syndrome (BPES) Defects in FOXL2 are a cause of premature ovarian failure type 3 (POF3). This antibody is specific to the C-term of FOXL2.

Notable Publications

Author	Pubmed ID	Journal	Application
Xian Zhang	34600579	Chin Med	IF
Siwen Zhang	33712079	Stem Cell Res Ther	IF,IHC
Jiaqiang Dong	28119367	Clin Cancer Res	WB,IHC

Storage

Storage:

Store at -20°C. Stable for one year after shipment.

Storage Buffer:

PBS with 0.02% sodium azide and 50% glycerol pH 7.3.

Aliquoting is unnecessary for -20°C storage

For technical support and original validation data for this product please contact:

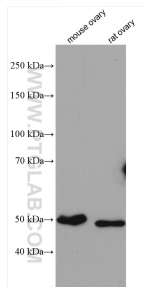
T: 4006900926

E: Proteintech-CN@ptglab.com

W: ptgcn.com

This product is exclusively available under Proteintech Group brand and is not available to purchase from any other manufacturer.

Selected Validation Data



Various lysates were subjected to SDS PAGE followed by western blot with 19672-1-AP (FOXL2-Specific antibody) at dilution of 1:1000 incubated at room temperature for 1.5 hours.