

For Research Use Only

ATG4C Polyclonal antibody

Catalog Number: 20382-1-AP **2 Publications**



Basic Information

Catalog Number: 20382-1-AP	GenBank Accession Number: BC033024	Purification Method: Antigen affinity purification
Size: 240 µg/ml	GeneID (NCBI): 84938	Recommended Dilutions: WB 1:200-1:1000 IHC 1:20-1:200 IF 1:200-1:800
Source: Rabbit	UNIPROT ID: Q96DT6	
Isotype: IgG	Full Name: ATG4 autophagy related 4 homolog C (S. cerevisiae)	
Immunogen Catalog Number: AG14207	Calculated MW: 458 aa, 52 kDa	
	Observed MW: 52-55 kDa	

Applications

Tested Applications: IF/ICC, IHC, WB, ELISA	Positive Controls: WB : Jurkat cells, IHC : human heart tissue, human testis tissue IF : HeLa cells,
Cited Applications: WB	
Species Specificity: human	
Cited Species: human, mouse	
Note-IHC: suggested antigen retrieval with TE buffer pH 9.0; (*) Alternatively, antigen retrieval may be performed with citrate buffer pH 6.0	

Background Information

Notable Publications

Author	Pubmed ID	Journal	Application
Wu Sun	32104496	Theranostics	WB
Isaac Tamargo-Gómez	37459465	Autophagy	WB

Storage

Storage:
Store at -20°C. Stable for one year after shipment.
Storage Buffer:
PBS with 0.02% sodium azide and 50% glycerol pH 7.3.
Aliquoting is unnecessary for -20°C storage

For technical support and original validation data for this product please contact:

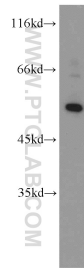
T: 4006900926

E: Proteintech-CN@ptglab.com

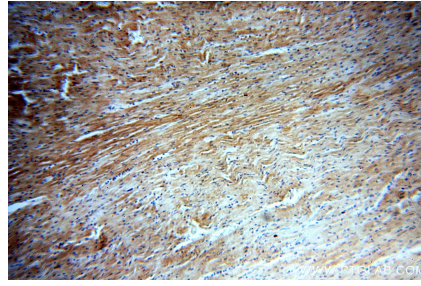
W: ptgcn.com

This product is exclusively available under Proteintech Group brand and is not available to purchase from any other manufacturer.

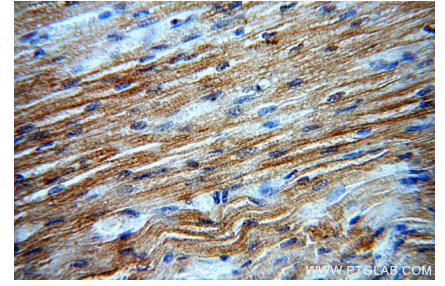
Selected Validation Data



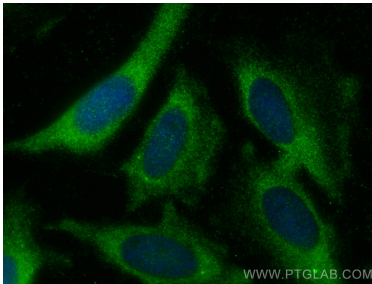
Jurkat cells were subjected to SDS PAGE followed by western blot with 20382-1-AP (ATG4C antibody) at dilution of 1:300 incubated at room temperature for 1.5 hours.



Immunohistochemical analysis of paraffin-embedded human heart using 20382-1-AP (ATG4C antibody) at dilution of 1:50 (under 10x lens).



Immunohistochemical analysis of paraffin-embedded human heart using 20382-1-AP (ATG4C antibody) at dilution of 1:50 (under 40x lens).



Immunofluorescent analysis of (-20°C Methanol) fixed HeLa cells using ATG4C antibody (20382-1-AP) at dilution of 1:400 and CoraLite®488-Conjugated AffiniPure Goat Anti-Rabbit IgG(H+L).