

For Research Use Only

# PAWR Polyclonal antibody

Catalog Number: 20688-1-AP **2 Publications**



## Basic Information

<b>Catalog Number:</b> 20688-1-AP	<b>GenBank Accession Number:</b> NM_002583	<b>Purification Method:</b> Antigen affinity purification
<b>Size:</b> 500 µg/ml	<b>GeneID (NCBI):</b> 5074	<b>Recommended Dilutions:</b> WB 1:500-1:1000 IHC 1:20-1:200
<b>Source:</b> Rabbit	<b>UNIPROT ID:</b> Q96I20	
<b>Isotype:</b> IgG	<b>Full Name:</b> PRKC, apoptosis, WT1, regulator	
	<b>Calculated MW:</b> 37 kDa	
	<b>Observed MW:</b> 45 kDa	

## Applications

<b>Tested Applications:</b> FC, IHC, WB, ELISA	<b>Positive Controls:</b> WB : mouse heart tissue, mouse kidney tissue IHC : human breast cancer tissue, human kidney tissue
<b>Cited Applications:</b> IHC, WB	
<b>Species Specificity:</b> human, mouse, rat	
<b>Cited Species:</b> human	
<b>Note-IHC: suggested antigen retrieval with TE buffer pH 9.0; (*) Alternatively, antigen retrieval may be performed with citrate buffer pH 6.0</b>	

## Background Information

PAWR, also named as PAR4, is a pro-apoptotic protein capable of selectively inducing apoptosis in cancer cells, sensitizing the cells to diverse apoptotic stimuli and causing regression of tumors in animal models. It induces apoptosis in certain cancer cells by activation of the Fas prodeath pathway and coparallel inhibition of NF-kappa-B transcriptional activity. PAWR inhibits the transcriptional activation and augments the transcriptional repression mediated by WT1. It down-regulates the anti-apoptotic protein BCL2 via its interaction with WT1. PAWR may be directly involved in regulating the amyloid precursor protein (APP) cleavage activity of BACE1. The antibody is specific to PAWR.

## Notable Publications

Author	Pubmed ID	Journal	Application
Jiahong Tan	33317551	Cancer Cell Int	IHC
Rokana Taftaf	34381029	Nat Commun	WB

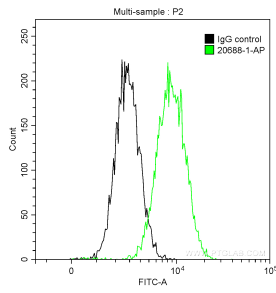
## Storage

**Storage:**  
Store at -20°C. Stable for one year after shipment.  
**Storage Buffer:**  
PBS with 0.02% sodium azide and 50% glycerol pH 7.3.  
Aliquoting is unnecessary for -20°C storage

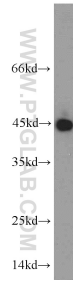
For technical support and original validation data for this product please contact:  
T: 4006900926 E: Proteintech-CN@ptglab.com W: ptgcn.com

**This product is exclusively available under Proteintech Group brand and is not available to purchase from any other manufacturer.**

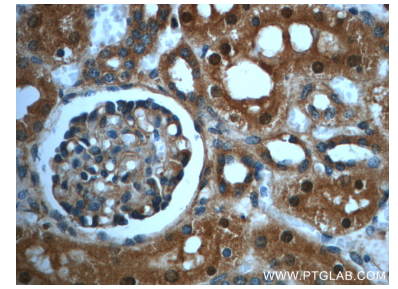
## Selected Validation Data



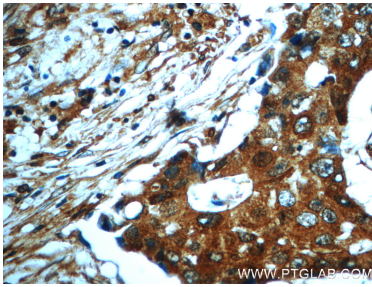
$1 \times 10^6$  HeLa cells were intracellularly stained with 0.2  $\mu$ g Anti-Human PAWR (20688-1-AP) and CoraLite@488-Conjugated AffiniPure Goat Anti-Rabbit IgG(H+L) at dilution 1:1000 (green), and 0.2  $\mu$ g Control Antibody. Cells were fixed with 90% MeOH.



mouse heart tissue were subjected to SDS PAGE followed by western blot with 20688-1-AP (PAWR antibody) at dilution of 1:400 incubated at room temperature for 1.5 hours.



Immunohistochemical analysis of paraffin-embedded human kidney slide using 20688-1-AP (PAWR Antibody) at dilution of 1:50.



Immunohistochemical analysis of paraffin-embedded human breast cancer slide using 20688-1-AP (PAWR Antibody) at dilution of 1:50.