

For Research Use Only

ARX Polyclonal antibody

Catalog Number: 20739-1-AP



Basic Information

Catalog Number: 20739-1-AP	GenBank Accession Number: NM_139058	Purification Method: Antigen affinity purification
Size: 400 µg/ml	GeneID (NCBI): 170302	Recommended Dilutions: WB 1:200-1:1000
Source: Rabbit	UNIPROT ID: Q96QS3	
Isotype: IgG	Full Name: aristaless related homeobox	
	Calculated MW: 58 kDa	
	Observed MW: 58 kDa	

Applications

Tested Applications: WB, ELISA	Positive Controls: WB : NIH/3T3 cells, SH-SY5Y cells
Species Specificity: human, mouse	

Background Information

ARX belongs to the paired homeobox family and Bicoid subfamily. It is a transcription factor which required for normal brain development. ARX may be important for maintenance of specific neuronal subtypes in the cerebral cortex and axonal guidance in the floor plate. Defects in ARX are the cause of lissencephaly X-linked type 2 (LISX2), epileptic encephalopathy early infantile type 1 (EIEE1), Partington syndrome (PRTS), mental retardation X-linked ARX-related (MRXARX), and agenesis of the corpus callosum with abnormal genitalia (ACCAG). The antibody is specific to ARX. This is a rabbit polyclonal antibody raised against a peptide mapping within human ARX.

Storage

Storage:
Store at -20°C. Stable for one year after shipment.
Storage Buffer:
PBS with 0.02% sodium azide and 50% glycerol pH 7.3.
Aliquoting is unnecessary for -20°C storage

For technical support and original validation data for this product please contact:

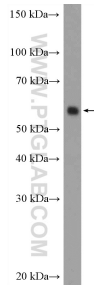
T: 4006900926

E: Proteintech-CN@ptglab.com

W: ptgcn.com

This product is exclusively available under Proteintech Group brand and is not available to purchase from any other manufacturer.

Selected Validation Data



NIH/3T3 cells were subjected to SDS PAGE followed by western blot with 20739-1-AP (ARX Antibody) at dilution of 1:300 incubated at room temperature for 1.5 hours.