

For Research Use Only

# HTATSF1 Polyclonal antibody

Catalog Number: 20805-1-AP

Featured Product

3 Publications



## Basic Information

**Catalog Number:**

20805-1-AP

**Size:**

300 µg/ml

**Source:**

Rabbit

**Isotype:**

IgG

**Immunogen Catalog Number:**

AG14744

**GenBank Accession Number:**

BC009896

**GeneID (NCBI):**

27336

**UNIPROT ID:**

O43719

**Full Name:**

HIV-1 Tat specific factor 1

**Calculated MW:**

755 aa, 86 kDa

**Observed MW:**

130-140 kDa

**Purification Method:**

Antigen affinity purification

**Recommended Dilutions:**

WB 1:1000-1:4000

IP 0.5-4.0 µg for 1.0-3.0 mg of total protein lysate

IHC 1:20-1:200

IF 1:10-1:100

## Applications

**Tested Applications:**

IF/ICC, IHC, IP, WB, ELISA

**Cited Applications:**

IHC, IP, WB

**Species Specificity:**

human, mouse, rat

**Cited Species:**

human

**Note-IHC:** suggested antigen retrieval with **TE buffer pH 9.0; (\*) Alternatively, antigen retrieval may be performed with citrate buffer pH 6.0**

**Positive Controls:**

**WB:** HeLa cells, mouse brain tissue, HepG2 cells, rat brain tissue, Jurkat cells

**IP:** HepG2 cells,

**IHC:** human breast cancer tissue, human brain tissue

**IF:** HeLa cells,

## Background Information

### Notable Publications

Author	Pubmed ID	Journal	Application
Jiao Zhao	35597237	Mol Cell	WB
Yu-Chan Chang	34091600	Cell Death Discov	WB,IHC,IP
Xiaodong Lu	27353326	Nucleic Acids Res	

## Storage

**Storage:**

Store at -20°C. Stable for one year after shipment.

**Storage Buffer:**

PBS with 0.02% sodium azide and 50% glycerol pH 7.3.

Aliquoting is unnecessary for -20°C storage

For technical support and original validation data for this product please contact:

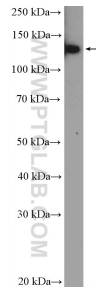
T: 4006900926

E: Proteintech-CN@ptglab.com

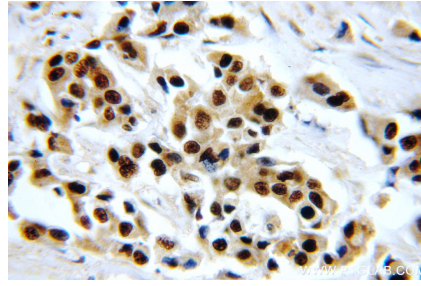
W: ptgcn.com

**This product is exclusively available under Proteintech Group brand and is not available to purchase from any other manufacturer.**

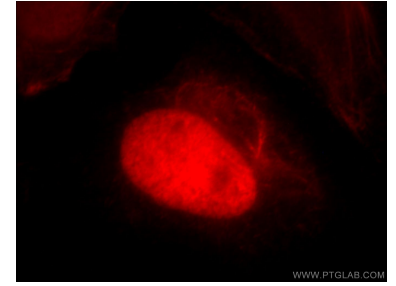
## Selected Validation Data



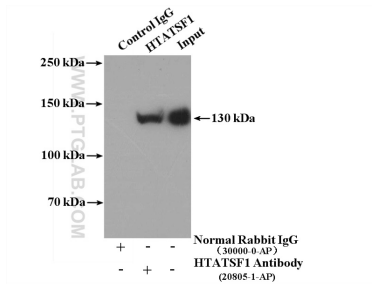
HeLa cells were subjected to SDS PAGE followed by western blot with 20805-1-AP (HTATSF1 Antibody) at dilution of 1:2000 incubated at room temperature for 1.5 hours.



Immunohistochemical analysis of paraffin-embedded human breast cancer using 20805-1-AP (HTATSF1 antibody) at dilution of 1:100 (under 40x lens).



Immunofluorescent analysis of HeLa cells, using HTATSF1 antibody 20805-1-AP at 1:25 dilution and Rhodamine-labeled goat anti-rabbit IgG (red).



IP result of anti-HTATSF1 (IP:20805-1-AP, 4ug; Detection:20805-1-AP 1:2000) with HepG2 cells lysate 2400ug.