

For Research Use Only

# LRRC17 Polyclonal antibody

Catalog Number: 20918-1-AP

Featured Product

2 Publications



## Basic Information

**Catalog Number:**

20918-1-AP

**Size:**

350 µg/ml

**Source:**

Rabbit

**Isotype:**

IgG

**Immunogen Catalog Number:**

AG15117

**GenBank Accession Number:**

BC027903

**GeneID (NCBI):**

10234

**UNIPROT ID:**

Q8N6Y2

**Full Name:**

leucine rich repeat containing 17

**Calculated MW:**

441 aa, 52 kDa

**Observed MW:**

52 kDa

**Purification Method:**

Antigen Affinity purified

**Recommended Dilutions:**

WB 1:200-1:1000

## Applications

**Tested Applications:**

WB, ELISA

**Cited Applications:**

WB

**Species Specificity:**

human, mouse

**Cited Species:**

human, mouse

**Positive Controls:**

WB : HeLa cells, mouse heart tissue

## Background Information

Leucine-rich repeat-containing protein 17 (LRRC17) is an LRR protein predominantly expressed by osteoblasts. LRRC17 acts as a negative regulator of receptor activator of NF-kappaB ligand (RANKL)-induced osteoclast differentiation (PMID: 19336404). It has been reported that low plasma level of LRRC17 is an independent risk factor for osteoporotic fractures (PMID: 2735564).

## Notable Publications

Author	Pubmed ID	Journal	Application
Da Song	33986831	Exp Ther Med	WB
Fei Liu	33865167	Redox Biol	WB

## Storage

**Storage:**

Store at -20°C. Stable for one year after shipment.

**Storage Buffer:**

PBS with 0.02% sodium azide and 50% glycerol pH 7.3.

Aliquoting is unnecessary for -20°C storage

For technical support and original validation data for this product please contact:

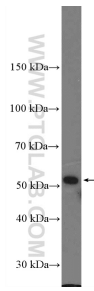
T: 4006900926

E: [Proteintech-CN@ptglab.com](mailto:Proteintech-CN@ptglab.com)

W: [ptgcn.com](http://ptgcn.com)

This product is exclusively available under Proteintech Group brand and is not available to purchase from any other manufacturer.

## Selected Validation Data



HeLa cells were subjected to SDS PAGE followed by western blot with 20918-1-AP (LRRC17 Antibody) at dilution of 1:300 incubated at room temperature for 1.5 hours.