

# Claudin 18 Polyclonal antibody

Catalog Number: 21126-1-AP 7 Publications

## Basic Information

<b>Catalog Number:</b> 21126-1-AP	<b>GenBank Accession Number:</b> BC146668	<b>Purification Method:</b> Antigen affinity purification
<b>Size:</b> 500 µg/ml	<b>GeneID (NCBI):</b> 51208	<b>Recommended Dilutions:</b> WB 1:500-1:1000
<b>Source:</b> Rabbit	<b>UNIPROT ID:</b> P56856	IP 0.5-4.0 ug for 1.0-3.0 mg of total protein lysate
<b>Isotype:</b> IgG	<b>Full Name:</b> claudin 18	IHC 1:50-1:400
<b>Immunogen Catalog Number:</b> AG15517	<b>Calculated MW:</b> 261 aa, 28 kDa	IF 1:50-1:500
	<b>Observed MW:</b> 28-29 kDa	

## Applications

**Tested Applications:**  
IF/ICC, IHC, IP, WB, ELISA

**Cited Applications:**  
IF, IHC, WB

**Species Specificity:**  
human, mouse, rat

**Cited Species:**  
human, rat, mouse

**Note-IHC: suggested antigen retrieval with TE buffer pH 9.0; (\*) Alternatively, antigen retrieval may be performed with citrate buffer pH 6.0**

**Positive Controls:**

**WB :** mouse kidney tissue,

**IP :** mouse stomach tissue,

**IHC :** human stomach tissue, human ovary tumor tissue, human pancreas cancer tissue, human stomach cancer tissue

**IF :** MKN-45 cells,

## Background Information

Claudin 18 (CLDN18) belongs to the large claudin family of proteins, which are tetraspan transmembrane proteins of tight junctions (PMID: 11585919; 18036336). Claudins exhibit specific patterns of expression in different tissues (PMID: 15447685). CLDN18 is specifically expressed in the stomach and lung. CLDN18 has two alternatively spliced variants, CLDN18.1 and CLDN18.2. CLDN18.2 is a highly selective gastric lineage marker that determines the gastric phenotype in a neoplastic condition, whereas CLDN18.1 is lung specific (PMID: 11585919; 21832145). Altered CLDN18 expression has been reported in various human malignancies, including gastric cancer, lung adenocarcinoma, and pancreatic neoplasm (PMID: 17459057; 22076167; 21832145). This antibody can recognize both CLDN18.1 and CLDN18.2.

## Notable Publications

Author	Pubmed ID	Journal	Application
Chunyan Wang	32160957	J Stroke Cerebrovasc Dis	IF
Ruixue Yang	31173170	Int J Mol Med	WB,IF
Yang Chen	35284551	Ann Transl Med	IHC

## Storage

**Storage:**

Store at -20°C. Stable for one year after shipment.

**Storage Buffer:**

PBS with 0.02% sodium azide and 50% glycerol pH 7.3.

Aliquoting is unnecessary for -20°C storage

For technical support and original validation data for this product please contact:

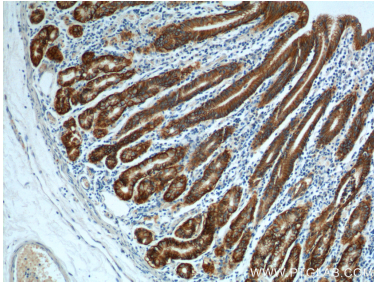
T: 4006900926

E: [Proteintech-CN@ptglab.com](mailto:Proteintech-CN@ptglab.com)

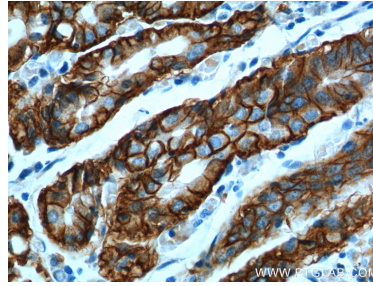
W: [ptgcn.com](http://ptgcn.com)

**This product is exclusively available under Proteintech Group brand and is not available to purchase from any other manufacturer.**

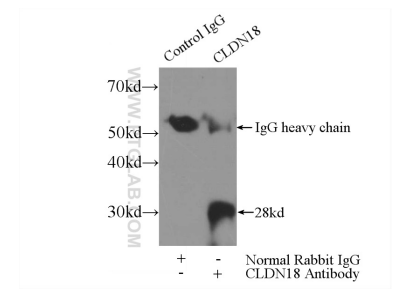
## Selected Validation Data



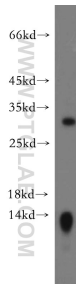
Immunohistochemical analysis of paraffin-embedded human stomach tissue slide using 21126-1-AP (Claudin 18 antibody at dilution of 1:200 (under 10x lens).



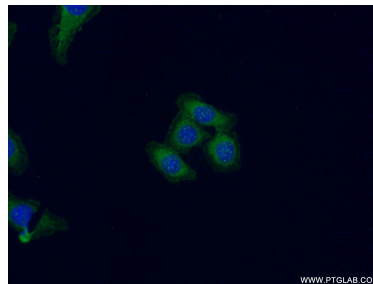
Immunohistochemical analysis of paraffin-embedded human stomach tissue slide using 21126-1-AP (Claudin 18 antibody at dilution of 1:200 (under 40x lens).



IP result of anti-Claudin 18 (IP:21126-1-AP, 3ug; Detection:21126-1-AP 1:500) with mouse stomach tissue lysate 4000ug.



mouse kidney tissue were subjected to SDS PAGE followed by western blot with 21126-1-AP (Claudin 18 antibody) at dilution of 1:500 incubated at room temperature for 1.5 hours.



Immunofluorescent analysis of (-20°C Ethanol) fixed MKN-45 cells using 21126-1-AP (Claudin 18 antibody) at dilution of 1:50 and Alexa Fluor 488-conjugated AffiniPure Goat Anti-Rabbit IgG(H+L).