

Ceruloplasmin Polyclonal antibody

Catalog Number: 21131-1-AP

5 Publications

Basic Information

Catalog Number:

21131-1-AP

Size:

500 µg/ml

Source:

Rabbit

Isotype:

IgG

Immunogen Catalog Number:

AG15535

GenBank Accession Number:

BC146663

GeneID (NCBI):

1356

UNIPROT ID:

P00450

Full Name:

ceruloplasmin (ferroxidase)

Calculated MW:

1065 aa, 122 kDa

Observed MW:

130-140 kDa, 85 kDa

Purification Method:

Antigen affinity purification

Recommended Dilutions:

WB 1:500-1:2000

IHC 1:50-1:500

Applications

Tested Applications:

IHC, WB, ELISA

Cited Applications:

WB, IF, IHC

Species Specificity:

human, mouse

Cited Species:

human, mouse

Note-IHC: suggested antigen retrieval with *TE buffer pH 9.0*; (*) Alternatively, antigen retrieval may be performed with *citrate buffer pH 6.0*

Positive Controls:

WB: human blood tissue, mouse brain tissue, human plasma tissue

IHC: human hepatocirrhosis tissue, human tonsillitis tissue

Background Information

Ceruloplasmin (CP) is a serum glycoprotein synthesized by hepatocytes and functions as the major transport protein of copper in blood where it acts as ferroxidase and is required for iron transport of transferrin. The intact ceruloplasmin migrated around 130-140 kDa and some proteolytic cleaved fragments could also be observed.

Notable Publications

Author	Pubmed ID	Journal	Application
Zhong-Da Li	36443285	Cell Death Dis	WB, IF
Hai-Yan Chen	36433654	J Clin Pharmacol	WB
Shanshan Sha	35954297	Cells	WB, IHC

Storage

Storage:

Store at -20°C. Stable for one year after shipment.

Storage Buffer:

PBS with 0.02% sodium azide and 50% glycerol pH 7.3.

Aliquoting is unnecessary for -20°C storage

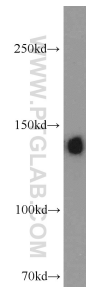
For technical support and original validation data for this product please contact:

T: 4006900926

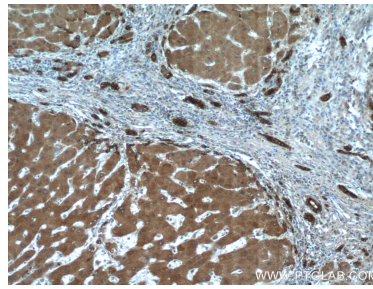
E: Proteintech-CN@ptglab.comW: ptgcn.com

This product is exclusively available under Proteintech Group brand and is not available to purchase from any other manufacturer.

Selected Validation Data



human blood were subjected to SDS PAGE followed by western blot with 21131-1-AP (Ceruloplasmin antibody) at dilution of 1:1000 incubated at room temperature for 1.5 hours.



Immunohistochemical analysis of paraffin-embedded human hepatocirrhosis tissue slide using 21131-1-AP (Ceruloplasmin antibody) at dilution of 1:200 (under 10x lens).