

For Research Use Only

# BCL6 Polyclonal antibody

Catalog Number: 21187-1-AP

Featured Product

16 Publications



## Basic Information

**Catalog Number:**

21187-1-AP

**Size:**

600 µg/ml

**Source:**

Rabbit

**Isotype:**

IgG

**Immunogen Catalog Number:**

AG15519

**GenBank Accession Number:**

BC150184

**GeneID (NCBI):**

604

**UNIPROT ID:**

P41182

**Full Name:**

B-cell CLL/lymphoma 6

**Calculated MW:**

706 aa, 79 kDa

**Observed MW:**

79-95 kDa

**Purification Method:**

Antigen affinity purification

**Recommended Dilutions:**

WB 1:500-1:3000

IP 0.5-4.0 µg for 1.0-3.0 mg of total protein lysate

IHC 1:200-1:800

## Applications

**Tested Applications:**

FC, IHC, IP, WB, ELISA

**Cited Applications:**

IHC, IP, WB

**Species Specificity:**

human

**Cited Species:**

human, mouse

**Note-IHC: suggested antigen retrieval with TE buffer pH 9.0; (\*) Alternatively, antigen retrieval may be performed with citrate buffer pH 6.0**

**Positive Controls:**

WB : Raji cells,

IP : Raji cells,

IHC : human tonsillitis tissue, human lymphoma tissue

## Background Information

BCL6, a zinc finger transcription factor, contains a N-terminal BTB/POZ domain and C-terminal zinc finger DNA-binding motifs and represses transcription of a wide range of target proteins and microRNAs. BCL6 protein has been reported as a master regulator of B lymphocyte development and growth, and altered BCL6 protein expression was implicated in pathogenesis of diverse human hematologic malignancies, especially in the diffuse large B cell lymphoma (DLBCL). BCL6 is required for the development of T follicular helper T cells (TFH), a helper T cell subset required for the formation of mature and productive GCs. BCL6 has also been shown to play important regulatory roles in macrophages.

## Notable Publications

Author	Pubmed ID	Journal	Application
Ranran Sun	33008587	Biochem Biophys Res Commun	WB
Shuang Zhang	34558634	Mol Med Rep	WB
Lai Chen	33191180	Int Immunopharmacol	WB

## Storage

**Storage:**

Store at -20°C. Stable for one year after shipment.

**Storage Buffer:**

PBS with 0.02% sodium azide and 50% glycerol pH 7.3.

Aliquoting is unnecessary for -20°C storage

For technical support and original validation data for this product please contact:

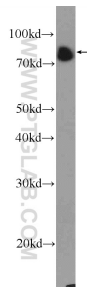
T: 4006900926

E: Proteintech-CN@ptglab.com

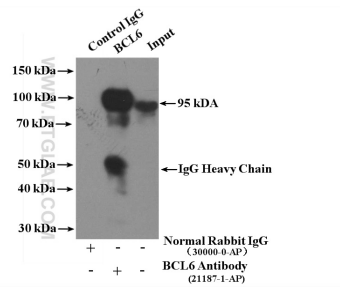
W: ptgcn.com

**This product is exclusively available under Proteintech Group brand and is not available to purchase from any other manufacturer.**

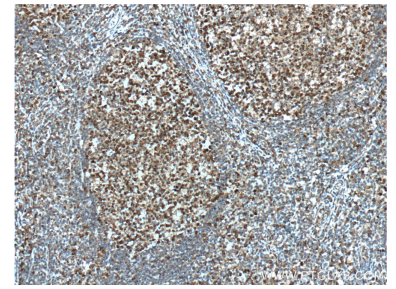
## Selected Validation Data



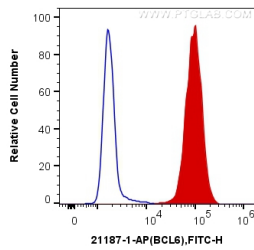
Raji cells were subjected to SDS PAGE followed by western blot with 21187-1-AP (BCL6 Antibody) at dilution of 1:1500 incubated at room temperature for 1.5 hours.



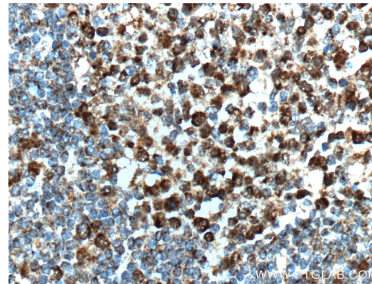
IP result of anti-BCL6 (IP:21187-1-AP, 4ug; Detection:21187-1-AP 1:1000) with Raji cells lysate 1400ug.



Immunohistochemical analysis of paraffin-embedded human tonsillitis tissue slide using 21187-1-AP (BCL6 Antibody) at dilution of 1:400 (under 10x lens). Heat mediated antigen retrieved with Sodium Citrate buffer (pH 6.0).



1X10<sup>6</sup> Ramos cells were intracellularly stained with 0.2 ug Anti-Human BCL6 (21187-1-AP) and CoraLite@488-Conjugated AffiniPure Goat Anti-Rabbit IgG(H+L) at dilution 1:1000 (red), or 0.2 ug Control Antibody. Cells were fixed and permeabilized with Transcription Factor Staining Buffer Kit (PF00011).



Immunohistochemical analysis of paraffin-embedded human tonsillitis tissue slide using 21187-1-AP (BCL6 Antibody) at dilution of 1:400 (under 40x lens). Heat mediated antigen retrieved with Sodium Citrate buffer (pH 6.0).