

For Research Use Only

MYH10 Polyclonal antibody

Catalog Number: 21403-1-AP



Basic Information

Catalog Number:

21403-1-AP

Size:

900 µg/ml

Source:

Rabbit

Isotype:

IgG

Immunogen Catalog Number:

AG16113

GenBank Accession Number:

BC150634

GeneID (NCBI):

4628

UNIPROT ID:

P35580

Full Name:

myosin, heavy chain 10, non-muscle

Calculated MW:

1985 aa, 230 kDa

Observed MW:

229 kDa

Purification Method:

Antigen affinity purification

Recommended Dilutions:

WB 1:2000-1:10000

IP 0.5-4.0 µg for 1.0-3.0 mg of total protein lysate

IF 1:10-1:100

Applications

Tested Applications:

FC, IF/ICC, IP, WB, ELISA

Species Specificity:

human, mouse, rat

Positive Controls:

WB : mouse brain tissue, rat brain

IP : mouse brain tissue,

IF : HepG2 cells,

Background Information

MYH10 (non-muscle II-b, NM IIB) is a member of non-muscle myosin II which plays fundamental roles in the maintenance of cell morphology, cell adhesion, and migration, as well as cell division. MYH10 is mainly present in nerve cells, megakaryocytes, and other non-muscle cells. It has been reported to mediate centrosome reorientation during cell migration and contribute to ciliogenesis. Overexpression of MYH10 has been observed in breast cancer.

Storage

Storage:

Store at -20°C. Stable for one year after shipment.

Storage Buffer:

PBS with 0.02% sodium azide and 50% glycerol pH 7.3.

Aliquoting is unnecessary for -20°C storage

For technical support and original validation data for this product please contact:

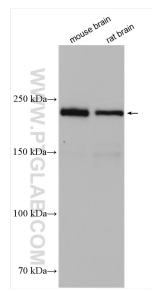
T: 4006900926

E: Proteintech-CN@ptglab.com

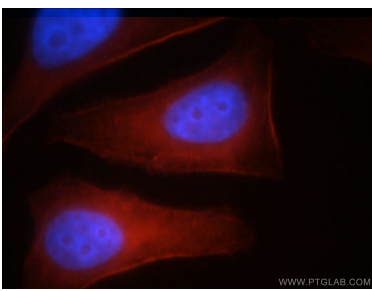
W: ptgcn.com

This product is exclusively available under Proteintech Group brand and is not available to purchase from any other manufacturer.

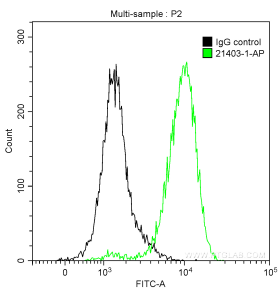
Selected Validation Data



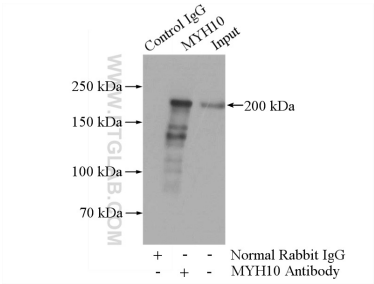
Various lysates were subjected to SDS PAGE followed by western blot with 21403-1-AP (MYH10 antibody) at dilution of 1:5000 incubated at room temperature for 1.5 hours.



Immunofluorescent analysis of HepG2 cells, using MYH10 antibody 21403-1-AP at 1:25 dilution and Rhodamine-labeled goat anti-rabbit IgG (red). Blue pseudocolor = DAPI (fluorescent DNA dye).



1X10⁶ HepG2 cells were intracellularly stained with 0.2 ug Anti-Human MYH10 (21403-1-AP) and CoraLite®488-Conjugated AffiniPure Goat Anti-Rabbit IgG(H+L) at dilution 1:1000 (green), and 0.2 ug Control Antibody. Cells were fixed with 90% MeOH.



IP result of anti-MYH10 (IP:21403-1-AP, 4ug; Detection:21403-1-AP 1:1500) with mouse brain tissue lysate 3440ug.