

# NEDD4 Polyclonal antibody

Catalog Number: 21698-1-AP

Featured Product

35 Publications

## Basic Information

**Catalog Number:**

21698-1-AP

**Size:**

550 µg/ml

**Source:**

Rabbit

**Isotype:**

IgG

**Immunogen Catalog Number:**

AG16291

**GenBank Accession Number:**

BC152452

**GeneID (NCBI):**

4734

**UNIPROT ID:**

P46934

**Full Name:**
neural precursor cell expressed,  
developmentally down-regulated 4
**Calculated MW:**

1319 aa, 149 kDa

**Observed MW:**

115 kDa

**Purification Method:**

Antigen affinity purification

**Recommended Dilutions:**

WB 1:1000-1:8000

IP 0.5-4.0 µg for 1.0-3.0 mg of total  
protein lysate

IHC 1:50-1:500

IF 1:200-1:800

## Applications

**Tested Applications:**

IF/ICC, IHC, IP, WB, ELISA

**Cited Applications:**

WB, IP, IF, IHC, CoIP

**Species Specificity:**

human, mouse, rat, monkey

**Cited Species:**

human, chicken, rat, mouse

**Note-IHC: suggested antigen retrieval with TE buffer pH 9.0; (\*) Alternatively, antigen retrieval may be performed with citrate buffer pH 6.0**

**Positive Controls:**
WB: A549 cells, C6 cells, HeLa cells, HT-1080 cells,  
Jurkat cells, HEK-293 cells, NIH/3T3 cells, COS-7 cells

IP: C6 cells,

IHC: human breast cancer tissue, human lung cancer  
tissue, human liver tissue

IF: U2OS cells,

## Background Information

NEDD4 and similar proteins discovered subsequently became a family of HECT ligases, comprising 9 human proteins including NEDD4, NEDD4-2 (NEDD4L), ITCH, SMURF1, SMURF2, WWP1, WWP2, NEDL1 and NEDL2. NEDD4 is a highly evolutionarily conserved protein from yeast to man, and was initially cloned as a highly expressed gene in the early embryonic brain. NEDD4 is frequently overexpressed in many different types of cancer, and decreased levels of NEDD4 can also be associated with cancer. It can be a potential therapeutic target for the treatment of human cancer. (PMID: 25527121). The human NEDD4 gene is located on chromosome 15q21.3 and comprises 30 exons (HGNC:7727) shown to encode a ~120 kDa protein. Otherwise there is a 75 kDa isoform in addition to full length NEDD4 (PMID: 24907641).

## Notable Publications

Author	Pubmed ID	Journal	Application
Haichuan Wang	33232824	Cell Mol Gastroenterol Hepatol	IHC
Yiru Shao	35355403	J Cell Mol Med	WB, IHC
Jincheng Zhang	35271885	Virus Res	WB

## Storage

**Storage:**

Store at -20°C. Stable for one year after shipment.

**Storage Buffer:**

PBS with 0.02% sodium azide and 50% glycerol pH 7.3.

Aliquoting is unnecessary for -20°C storage

For technical support and original validation data for this product please contact:

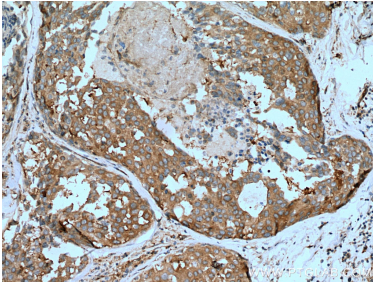
T: 4006900926

E: Proteintech-CN@ptglab.com

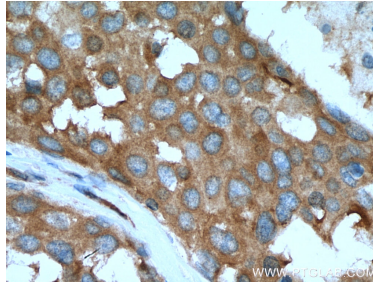
W: ptgcn.com

**This product is exclusively available under Proteintech Group brand and is not available to purchase from any other manufacturer.**

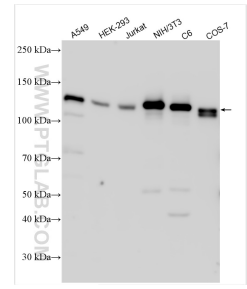
## Selected Validation Data



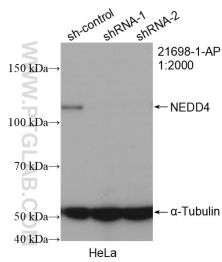
Immunohistochemical analysis of paraffin-embedded human breast cancer tissue slide using 21698-1-AP (NEDD4 antibody) at dilution of 1:200 (under 10x lens). Heat mediated antigen retrieval with Tris-EDTA buffer (pH 9.0).



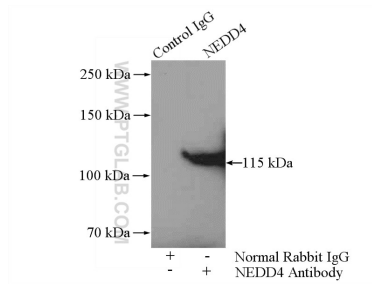
Immunohistochemical analysis of paraffin-embedded human breast cancer tissue slide using 21698-1-AP (NEDD4 antibody) at dilution of 1:200 (under 40x lens). Heat mediated antigen retrieval with Tris-EDTA buffer (pH 9.0).



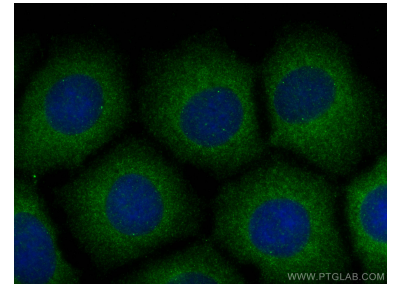
Various lysates were subjected to SDS PAGE followed by western blot with 21698-1-AP (NEDD4 antibody) at dilution of 1:4000 incubated at room temperature for 1.5 hours.



WB result of NEDD4 antibody (21698-1-AP; 1:2000; incubated at room temperature for 1.5 hours) with sh-Control and sh-NEDD4 transfected HeLa cells.



IP result of anti-NEDD4 (IP:21698-1-AP, 4ug; Detection:21698-1-AP 1:500) with C6 cells lysate 1600ug.



Immunofluorescent analysis of (-20°C Methanol) fixed U2OS cells using NEDD4 antibody (21698-1-AP) at dilution of 1:400 and CoraLite®488-Conjugated AffiniPure Goat Anti-Rabbit IgG(H+L).