

For Research Use Only

# Integrin Alpha 3 Polyclonal antibody



Catalog Number: 21992-1-AP

Featured Product

2 Publications

## Basic Information

**Catalog Number:**

21992-1-AP

**Size:**

500 µg/ml

**Source:**

Rabbit

**Isotype:**

IgG

**Immunogen Catalog Number:**

AG17293

**GenBank Accession Number:**

BC150190

**GeneID (NCBI):**

3675

**UNIPROT ID:**

P26006

**Full Name:**

integrin, alpha 3 (antigen CD49C, alpha 3 subunit of VLA-3 receptor)

**Calculated MW:**

1066 aa, 119 kDa

**Observed MW:**

130-160 kDa

**Purification Method:**

Antigen affinity purification

**Recommended Dilutions:**

WB 1:5000-1:50000

IP 0.5-4.0 µg for 1.0-3.0 mg of total protein lysate

IHC 1:50-1:500

IF 1:500-1:2000

## Applications

**Tested Applications:**

FC, IF/ICC, IHC, IP, WB, ELISA

**Cited Applications:**

IF, WB

**Species Specificity:**

human, mouse

**Cited Species:**

human, mouse

**Positive Controls:**

**WB:** A549 cells, human heart tissue, human testis tissue, PC-3 cells

**IP:** PC-3 cells,

**IHC:** mouse colon tissue,

**IF:** A549 cells,

**Note-IHC: suggested antigen retrieval with TE buffer pH 9.0; (\*) Alternatively, antigen retrieval may be performed with citrate buffer pH 6.0**

## Background Information

ITGA3, also named as MSK18, CD49c, GAPB3 and FRP-2, belongs to the integrin alpha chain family. It is a receptor for fibronectin, laminin, collagen, epiligrin, thrombospondin and CSPG4. ITGA3 may mediate with LGALS3 the stimulation by CSPG4 of endothelial cells migration. ITGA3 is highly concentrated in epithelial cells where it strongly adheres to Laminin-5 and Laminin-5 induced rapid adhesion can be blocked by antibodies against the alpha-3 integrin subunit. It can be cleaved into heavy chain(840aa) and light chain(176aa). This antibody can recognize the heavy chain.

## Notable Publications

Author	Pubmed ID	Journal	Application
Eunnyung Bae	35879332	Nat Commun	WB,IF
Qiqiao Du	32117712	Front Oncol	WB

## Storage

**Storage:**

Store at -20°C. Stable for one year after shipment.

**Storage Buffer:**

PBS with 0.02% sodium azide and 50% glycerol pH 7.3.

Aliquoting is unnecessary for -20°C storage

For technical support and original validation data for this product please contact:

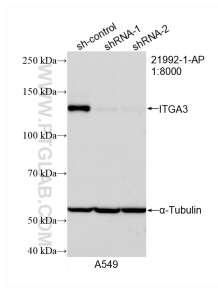
T: 4006900926

E: Proteintech-CN@ptglab.com

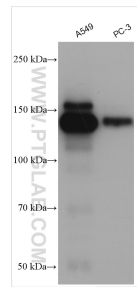
W: ptgcn.com

This product is exclusively available under Proteintech Group brand and is not available to purchase from any other manufacturer.

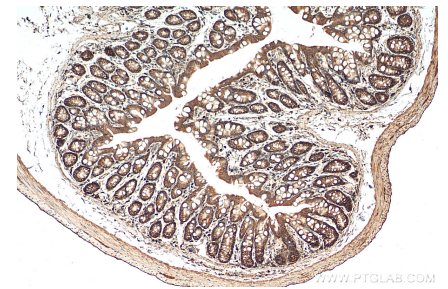
## Selected Validation Data



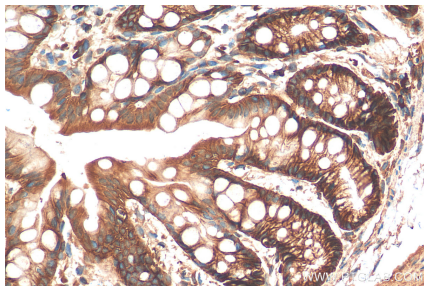
WB result of Integrin Alpha 3 antibody (21992-1-AP; 1:8000; incubated at room temperature for 1.5 hours) with sh-Control and sh-Integrin Alpha 3 transfected A549 cells.



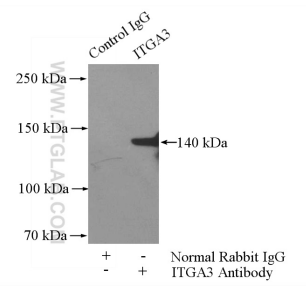
A549 cells were subjected to SDS PAGE followed by western blot with 21992-1-AP (Integrin Alpha 3 antibody) at dilution of 1:10000 incubated at room temperature for 1.5 hours.



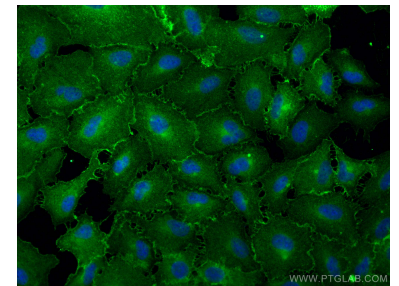
Immunohistochemical analysis of paraffin-embedded mouse colon tissue slide using 21992-1-AP (Integrin Alpha 3 antibody) at dilution of 1:200 (under 10x lens). Heat mediated antigen retrieval with Tris-EDTA buffer (pH 9.0).



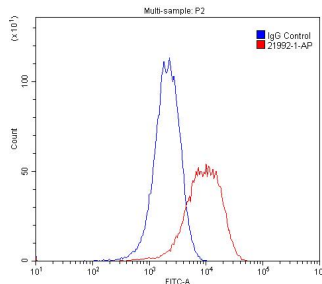
Immunohistochemical analysis of paraffin-embedded mouse colon tissue slide using 21992-1-AP (Integrin Alpha 3 antibody) at dilution of 1:200 (under 40x lens). Heat mediated antigen retrieval with Tris-EDTA buffer (pH 9.0).



IP result of anti-Integrin Alpha 3 (IP:21992-1-AP, 4ug; Detection:21992-1-AP 1:500) with PC-3 cells lysate 1200ug.



Immunofluorescent analysis of (-20°C Methanol) fixed A549 cells using Integrin Alpha 3 antibody (21992-1-AP) at dilution of 1:1000 and CoraLite@488-Conjugated AffiniPure Goat Anti-Rabbit IgG(H+L).



1X10<sup>6</sup> PC-3 cells were stained with 0.2ug Integrin alpha-3 antibody (21992-1-AP, red) and control antibody (blue). Fixed with 4% PFA blocked with 3% BSA (30 min). Alexa Fluor 488-conjugated AffiniPure Goat Anti-Rabbit IgG(H+L) with dilution 1:1500.