

For Research Use Only

# CD107a / LAMP1 Polyclonal antibody



Catalog Number: 21997-1-AP

97 Publications

## Basic Information

<b>Catalog Number:</b> 21997-1-AP	<b>GenBank Accession Number:</b> BC021288	<b>Purification Method:</b> Antigen affinity purification
<b>Size:</b> 650 µg/ml	<b>GeneID (NCBI):</b> 3916	<b>Recommended Dilutions:</b> WB 1:1000-1:8000 IHC 1:50-1:500
<b>Source:</b> Rabbit	<b>ENSEMBL Gene ID:</b> ENSG00000185896	
<b>Isotype:</b> IgG	<b>UNIPROT ID:</b> P11279	
<b>Immunogen Catalog Number:</b> AG17367	<b>Full Name:</b> lysosomal-associated membrane protein 1	
	<b>Calculated MW:</b> 417 aa, 45 kDa	
	<b>Observed MW:</b> 90-120 kDa	

## Applications

### Tested Applications:

IHC, WB, ELISA

### Cited Applications:

FC, IHC, IP, WB

### Species Specificity:

human

### Cited Species:

turtle, human, monkey, zebrafish, bovine

**Note-IHC: suggested antigen retrieval with TE buffer pH 9.0; (\*) Alternatively, antigen retrieval may be performed with citrate buffer pH 6.0**

### Positive Controls:

WB : HepG2 cells, U937 cells

IHC : human liver cancer tissue, human placenta tissue, human gliomas tissue, human pancreas tissue

## Background Information

LAMP1 (also known as CD107a) is a 90-120 kDa heavily glycosylated membrane protein enriched in the lysosomal membrane. LAMP1 functions to provide selectins with carbohydrate ligands. This protein has also been shown to be a marker of degranulation on lymphocytes such as CD8+ and NK cells and may also play a role in tumor cell differentiation and metastasis.

## Notable Publications

Author	Pubmed ID	Journal	Application
Wei Cai	36170234	Autophagy	
Yong Fan	34560177	Food Chem Toxicol	WB
Jie Liu	36096243	Life Sci	WB

## Storage

### Storage:

Store at -20°C. Stable for one year after shipment.

### Storage Buffer:

PBS with 0.02% sodium azide and 50% glycerol pH 7.3.

Aliquoting is unnecessary for -20°C storage

For technical support and original validation data for this product please contact:

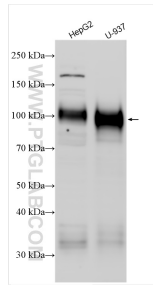
T: 4006900926

E: Proteintech-CN@ptglab.com

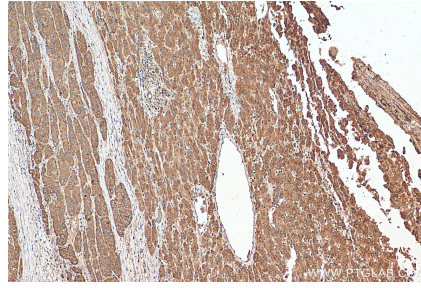
W: ptgcn.com

**This product is exclusively available under Proteintech Group brand and is not available to purchase from any other manufacturer.**

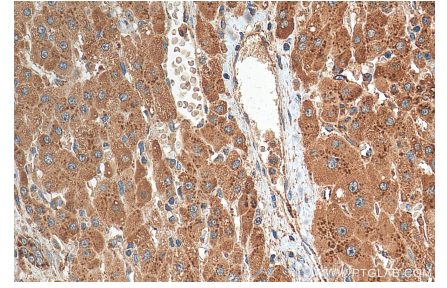
## Selected Validation Data



Various lysates were subjected to SDS PAGE followed by western blot with 21997-1-AP (CD107a / LAMP1 antibody) at dilution of 1:4000 incubated at room temperature for 1.5 hours.



Immunohistochemical analysis of paraffin-embedded human liver cancer tissue slide using 21997-1-AP (LAMP1 antibody) at dilution of 1:200 (under 10x lens). Heat mediated antigen retrieval with Tris-EDTA buffer (pH 9.0).



Immunohistochemical analysis of paraffin-embedded human liver cancer tissue slide using 21997-1-AP (LAMP1 antibody) at dilution of 1:200 (under 40x lens). Heat mediated antigen retrieval with Tris-EDTA buffer (pH 9.0).