

For Research Use Only

CEP97 Polyclonal antibody

Catalog Number: 22050-1-AP **19 Publications**



Basic Information

Catalog Number: 22050-1-AP	GenBank Accession Number: BC041085	Purification Method: Antigen affinity purification
Size: 500 µg/ml	GeneID (NCBI): 79598	Recommended Dilutions: WB 1:500-1:2000
Source: Rabbit	UNIPROT ID: Q8IW35	IP 0.5-4.0 µg for 1.0-3.0 mg of total protein lysate
Isotype: IgG	Full Name: centrosomal protein 97kDa	IHC 1:20-1:200
Immunogen Catalog Number: AG16995	Calculated MW: 865 aa, 97 kDa	IF 1:20-1:200
	Observed MW: 130-140 kDa	

Applications

Tested Applications: IF/ICC, IHC, IP, WB, ELISA	Positive Controls: WB : HL-60 cells, HEK-293 cells, HeLa cells, PC-3 cells
Cited Applications: WB, IP, IF	IP : HeLa cells,
Species Specificity: human, Canine	IHC : human breast cancer tissue, human liver tissue
Cited Species: human, mouse, Drosophila	IF : MDCK cells,

Note-IHC: suggested antigen retrieval with TE buffer pH 9.0; (*) Alternatively, antigen retrieval may be performed with citrate buffer pH 6.0

Background Information

CEP97, also named as LRRIQ2, contains one IQ domain, eight LRR (leucine-rich) repeats and one LRRCT domain. It collaborates with CEP110, being involved in the suppression of a cilia assembly program. CEP97 is required for correct spindle formation and has a role in cytokinesis. It is required for recruitment of CEP110 to the centrosome. This protein has a calculated MW ~97 kDa, although the protein migrates at a molecular weight of approximate 140 kDa. The protein is highly acidic, with a pI ~4.7, providing a potential explanation for its reduced mobility in SDS-PAGE. [PMID: 17719545]. This is a rabbit polyclonal antibody raised against the C terminus of human CEP97.

Notable Publications

Author	Pubmed ID	Journal	Application
Min Liu	34480124	Cell Res	WB
Ning Huang	30375385	Nat Commun	WB, IF
Xiao-Lin Shen	34813648	J Cell Biol	IF, IP

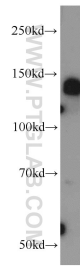
Storage

Storage:
Store at -20°C. Stable for one year after shipment.
Storage Buffer:
PBS with 0.02% sodium azide and 50% glycerol pH 7.3.
Aliquoting is unnecessary for -20°C storage

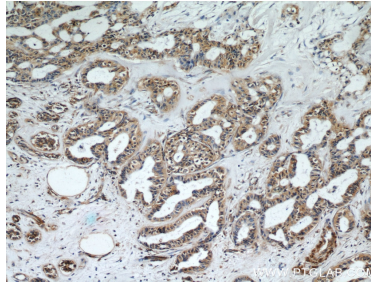
For technical support and original validation data for this product please contact:
T: 4006900926 E: Proteintech-CN@ptglab.com W: ptgcn.com

This product is exclusively available under Proteintech Group brand and is not available to purchase from any other manufacturer.

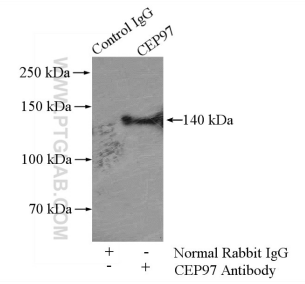
Selected Validation Data



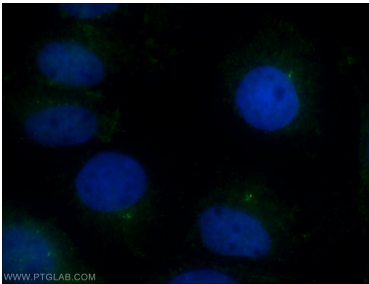
HL-60 cells were subjected to SDS PAGE followed by western blot with 22050-1-AP (CEP97 antibody) at dilution of 1:1000 incubated at room temperature for 1.5 hours.



Immunohistochemical analysis of paraffin-embedded human breast cancer using 22050-1-AP (CEP97 antibody) at dilution of 1:50 (under 10x lens).



IP result of anti-CEP97 (IP:22050-1-AP, 4ug; Detection:22050-1-AP 1:1000) with HeLa cells lysate 1200ug.



Immunofluorescent analysis of MDCK cells using 22050-1-AP (CEP97 antibody) at dilution of 1:50 and Alexa Fluor 488-conjugated AffiniPure Goat Anti-Rabbit IgG(H+L).