

For Research Use Only

ACP1 Polyclonal antibody

Catalog Number: 22214-1-AP

1 Publications



Basic Information

Catalog Number:

22214-1-AP

Concentration:

220 µg/ml

Source:

Rabbit

Isotype:

IgG

Immunogen Catalog Number:

AG17539

GenBank Accession Number:

BC007422

GeneID (NCBI):

52

UNIPROT ID:

P24666

Full Name:

acid phosphatase 1, soluble

Calculated MW:

158 aa, 18 kDa

Observed MW:

18 kDa

Purification Method:

Antigen affinity purification

Recommended Dilutions:

WB 1:500-1:2000

IHC 1:200-1:800

Applications

Tested Applications:

WB, IHC, ELISA

Cited Applications:

IF

Species Specificity:

human, mouse

Cited Species:

human

Note-IHC: suggested antigen retrieval with TE buffer pH 9.0; (*) Alternatively, antigen retrieval may be performed with citrate buffer pH 6.0

Positive Controls:

WB : mouse brain tissue, 4T1 cells

IHC : human breast cancer tissue, human lung cancer tissue

Background Information

Human red cell acid phosphatase (ACP1) is a polymorphic enzyme closely related to cytosolic low molecular weight acid phosphatases, a protein family broadly conserved among eukaryotes. It catalyses the transfer of phosphate from phosphate ester substrates to suitable acceptor alcohols such as methanol and glycerol. This protein has 3 isoforms produced by alternative splicing.

Notable Publications

Author	Pubmed ID	Journal	Application
Tao Wang	36151083	Nat Commun	IF

Storage

Storage:

Store at -20°C. Stable for one year after shipment.

Storage Buffer:

PBS with 0.02% sodium azide and 50% glycerol, pH7.3

Aliquoting is unnecessary for -20°C storage

For technical support and original validation data for this product please contact:

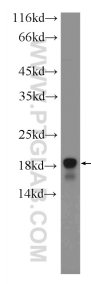
T: 4006900926

E: Proteintech-CN@ptglab.com

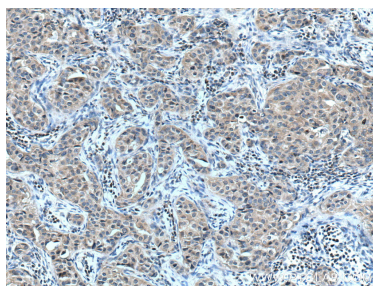
W: ptgcn.com

This product is exclusively available under Proteintech Group brand and is not available to purchase from any other manufacturer.

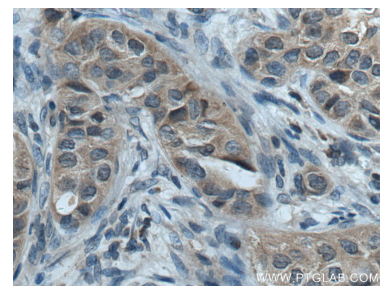
Selected Validation Data



mouse brain tissue were subjected to SDS PAGE followed by western blot with 22214-1-AP (ACP1 antibody) at dilution of 1:1000 incubated at room temperature for 1.5 hours.



Immunohistochemical analysis of paraffin-embedded human breast cancer tissue slide using 22214-1-AP (ACP1 antibody) at dilution of 1:400 (under 10x lens. Heat mediated antigen retrieval with Tris-EDTA buffer (pH 9.0).



Immunohistochemical analysis of paraffin-embedded human breast cancer tissue slide using 22214-1-AP (ACP1 antibody) at dilution of 1:400 (under 40x lens. Heat mediated antigen retrieval with Tris-EDTA buffer (pH 9.0).