

For Research Use Only

# CEP164 Polyclonal antibody

Catalog Number: 22227-1-AP **52 Publications**



## Basic Information

<b>Catalog Number:</b> 22227-1-AP	<b>GenBank Accession Number:</b> BC000602	<b>Purification Method:</b> Antigen affinity purification
<b>Size:</b> 900 µg/ml	<b>GeneID (NCBI):</b> 22897	<b>Recommended Dilutions:</b> WB 1:200-1:1000
<b>Source:</b> Rabbit	<b>UNIPROT ID:</b> Q9UPV0	IP 0.5-4.0 µg for 1.0-3.0 mg of total protein lysate
<b>Isotype:</b> IgG	<b>Full Name:</b> centrosomal protein 164kDa	IHC 1:20-1:200
<b>Immunogen Catalog Number:</b> AG17570	<b>Calculated MW:</b> 1460 aa, 164 kDa	IF 1:200-1:800
	<b>Observed MW:</b> 164 kDa	

## Applications

<b>Tested Applications:</b> IF/ICC, IHC, IP, WB, ELISA	<b>Positive Controls:</b> WB : HEK-293 cells, IP : RPE1 cells, IHC : human colon tissue, human cervical cancer tissue IF : HeLa cells, A549 cells, PC-3 cells, MDCK cells, hTERT-RPE1 cells
<b>Cited Applications:</b> WB, IP, IHC, IF	
<b>Species Specificity:</b> human, Canine	
<b>Cited Species:</b> human, mouse	
<b>Note-IHC: suggested antigen retrieval with TE buffer pH 9.0; (*) Alternatively, antigen retrieval may be performed with citrate buffer pH 6.0</b>	

## Background Information

CEP164, also named as KIAA1052 or NPHP15, is a 1460 amino acid protein, which contains 1 WW domain. CEP164 localizes in the microtubule organizing center and is expressed in several cell lines. CEP164 plays a role in microtubule organization and/or maintenance for the formation of primary cilia, a microtubule-based structure that protrudes from the surface of epithelial cells. CEP164 plays a critical role in G2/M checkpoint and nuclear divisions. The expression of CEP164 is normally limited to the mother centriole, and CEP164 can be used as a useful marker for mother centriole.

## Notable Publications

Author	Pubmed ID	Journal	Application
Ana Martin-Hurtado	31554934	Sci Rep	IF
Marine H Laporte	36125182	EMBO J	IF
Louise A Stephen	26386247	Elife	IF

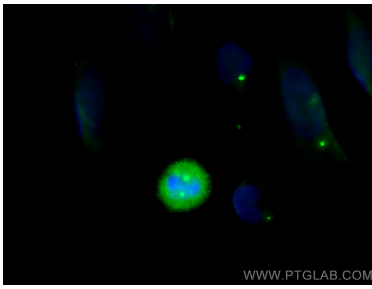
## Storage

**Storage:**  
Store at -20°C. Stable for one year after shipment.  
**Storage Buffer:**  
PBS with 0.02% sodium azide and 50% glycerol pH 7.3.  
Aliquoting is unnecessary for -20°C storage

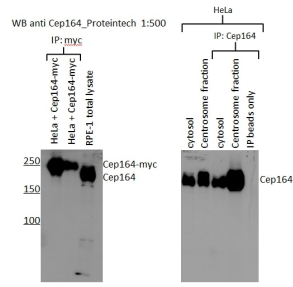
For technical support and original validation data for this product please contact:  
T: 4006900926 E: Proteintech-CN@ptglab.com W: ptgcn.com

**This product is exclusively available under Proteintech Group brand and is not available to purchase from any other manufacturer.**

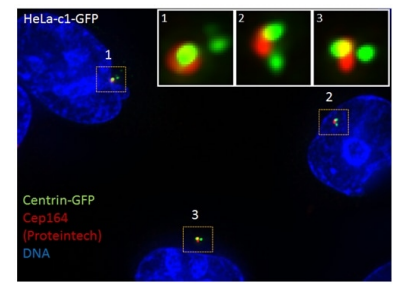
## Selected Validation Data



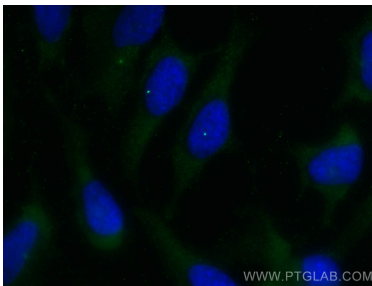
Immunofluorescent analysis of (-20°C Methanol) fixed HeLa cells using CEP164 antibody (22227-1-AP) at dilution of 1:400 and CoraLite®488-Conjugated AffiniPure Goat Anti-Rabbit IgG(H+L).



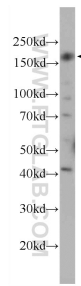
WB results of CEP164 (22227-1-AP, 1:500) with RPE1 cells by Laboratory of Protein Dynamics and Signaling; Center for Cancer Research, National Cancer Institute.



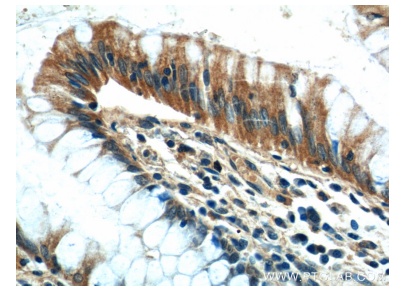
IF results of CEP164 (22227-1-AP, 1:1000) with HeLa cells (1.5% formaldehyde, 10 min RT) by Laboratory of Protein Dynamics and Signaling; Center for Cancer Research, National Cancer Institute.



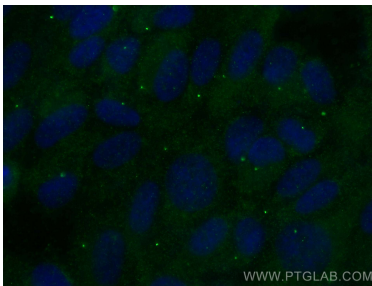
Immunofluorescent analysis of (-20°C Methanol) fixed HeLa cells using CEP164 antibody (22227-1-AP) at dilution of 1:200 and CoraLite®488-Conjugated AffiniPure Goat Anti-Rabbit IgG(H+L).



HEK-293 cells were subjected to SDS PAGE followed by western blot with 22227-1-AP (CEP164 Antibody) at dilution of 1:300 incubated at room temperature for 1.5 hours.



Immunohistochemical analysis of paraffin-embedded human colon tissue slide using 22227-1-AP (CEP164 Antibody) at dilution of 1:50 (under 40x lens).



Immunofluorescent analysis of (-20°C Ethanol) fixed hTERT-RPE1 cells using CEP164 antibody (22227-1-AP) at dilution of 1:200 and CoraLite®488-Conjugated AffiniPure Goat Anti-Rabbit IgG(H+L).