

For Research Use Only

ASF1A-specific Polyclonal antibody

Catalog Number: 22259-1-AP

Featured Product

1 Publications



Basic Information

Catalog Number:

22259-1-AP

Size:

1000 µg/ml

Source:

Rabbit

Isotype:

IgG

Immunogen Catalog Number:

AG17764

GenBank Accession Number:

BC010878

GeneID (NCBI):

25842

UNIPROT ID:

Q9Y294

Full Name:

ASF1 anti-silencing function 1 homolog A (S. cerevisiae)

Calculated MW:

204 aa, 23 kDa

Observed MW:

20-23 kDa

Purification Method:

Antigen affinity purification

Recommended Dilutions:

WB 1:1000-1:4000

IF 1:50-1:500

Applications

Tested Applications:

IF/ICC, WB, ELISA

Cited Applications:

WB, IF

Species Specificity:

human, mouse, rat

Cited Species:

human

Positive Controls:

WB : HeLa cells, HepG2 cells

IF : NIH/3T3 cells,

Background Information

This gene encodes a member of the H3/H4 family of histone chaperone proteins and is similar to the anti-silencing function-1 gene in yeast. The protein is a key component of a histone donor complex that functions in nucleosome assembly. It interacts with histones H3 and H4, and functions together with a chromatin assembly factor during DNA replication and repair. This antibody is specific to the 23kd ASF1A protein.

Notable Publications

Author	Pubmed ID	Journal	Application
Sumin Feng	35177609	Nat Commun	WB,IF

Storage

Storage:

Store at -20°C. Stable for one year after shipment.

Storage Buffer:

PBS with 0.02% sodium azide and 50% glycerol pH 7.3.

Aliquoting is unnecessary for -20°C storage

For technical support and original validation data for this product please contact:

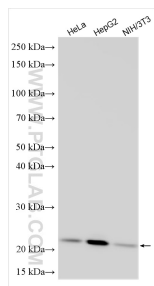
T: 4006900926

E: Proteintech-CN@ptglab.com

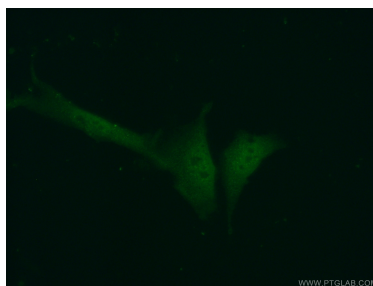
W: ptgcn.com

This product is exclusively available under Proteintech Group brand and is not available to purchase from any other manufacturer.

Selected Validation Data



Various lysates were subjected to SDS PAGE followed by western blot with 22259-1-AP (ASF1A-specific antibody) at dilution of 1:2000 incubated at room temperature for 1.5 hours.



Immunofluorescent analysis of (10% Formaldehyde) fixed NIH/3T3 cells using 22259-1-AP (ASF1A antibody) at dilution of 1:50 and Alexa Fluor 488-conjugated AffiniPure Goat Anti-Rabbit IgG(H+L).