

For Research Use Only

CCL27 Polyclonal antibody

Catalog Number: 22301-1-AP



Basic Information

Catalog Number: 22301-1-AP	GenBank Accession Number: NM_006664	Purification Method: Antigen affinity purification
Size: 300 µg/ml	GeneID (NCBI): 10850	Recommended Dilutions: IHC 1:20-1:200 IF 1:10-1:100
Source: Rabbit	UNIPROT ID: Q9Y4X3	
Isotype: IgG	Full Name: chemokine (C-C motif) ligand 27	
	Calculated MW: 13 kDa	

Applications

Tested Applications: IF/ICC, IHC, ELISA	Positive Controls:
Species Specificity: human	IHC: human testis tissue, human liver tissue, human liver cancer tissue, human skin tissue, human skin cancer tissue
Note-IHC: <i>suggested antigen retrieval with TE buffer pH 9.0; (*) Alternatively, antigen retrieval may be performed with citrate buffer pH 6.0</i>	IF: A431 cells,

Background Information

CCL27, also known as CTACK, is a member of the CC chemokine subfamily. CCL27 is predominantly expressed in skin and selectively attracts cutaneous lymphocyte antigen-positive T cells and Langerhans cells. The CCL27 secreted from keratinocytes was reportedly involved in inflammatory skin diseases such as atopic dermatitis, contact dermatitis, and psoriasis. CCL27 is a ligand to CCR10. The binding of CCL27 to CCR10 on T cells promotes their migration to the skin, where they can then participate in local immune responses.

Storage

Storage:
Store at -20°C. Stable for one year after shipment.
Storage Buffer:
PBS with 0.02% sodium azide and 50% glycerol pH 7.3.
Aliquoting is unnecessary for -20°C storage

For technical support and original validation data for this product please contact:

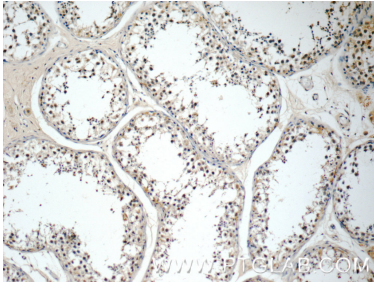
T: 4006900926

E: Proteintech-CN@ptglab.com

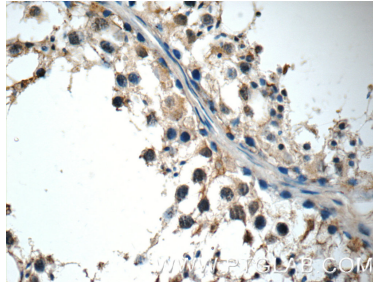
W: ptgcn.com

This product is exclusively available under Proteintech Group brand and is not available to purchase from any other manufacturer.

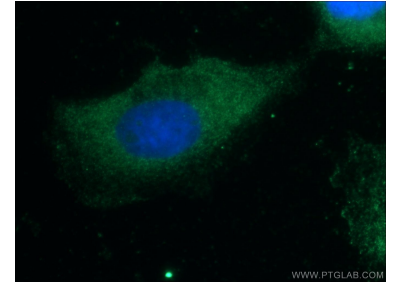
Selected Validation Data



Immunohistochemical analysis of paraffin-embedded human testis tissue slide using 22301-1-AP (CCL27 Antibody) at dilution of 1:50 (under 10x lens).



Immunohistochemical analysis of paraffin-embedded human testis tissue slide using 22301-1-AP (CCL27 Antibody) at dilution of 1:50 (under 40x lens).



Immunofluorescent analysis of A431 cells using 22301-1-AP (CCL27 antibody) at dilution of 1:25 and Alexa Fluor 488-conjugated AffiniPure Goat Anti-Rabbit IgG(H+L).