

For Research Use Only

# BTG2 Polyclonal antibody

Catalog Number: 22339-1-AP

Featured Product

7 Publications



## Basic Information

**Catalog Number:**

22339-1-AP

**Size:**

500 µg/ml

**Source:**

Rabbit

**Isotype:**

IgG

**Immunogen Catalog Number:**

AG17819

**GenBank Accession Number:**

BC105949

**GeneID (NCBI):**

7832

**UNIPROT ID:**

P78543

**Full Name:**

BTG family, member 2

**Calculated MW:**

158 aa, 17 kDa

**Purification Method:**

Antigen affinity purification

**Recommended Dilutions:**

IHC 1:50-1:500

IF 1:200-1:800

## Applications

**Tested Applications:**

FC, IF/ICC, IHC, ELISA

**Cited Applications:**

WB, IF, IHC

**Species Specificity:**

human, mouse

**Cited Species:**

human, mouse

**Note-IHC: suggested antigen retrieval with TE buffer pH 9.0; (\*) Alternatively, antigen retrieval may be performed with citrate buffer pH 6.0**

**Positive Controls:**

**IHC:** mouse small intestine tissue, human kidney tissue

**IF:** Neuro-2a cells,

## Background Information

Protein BTG2, the anti-proliferative human homolog of murine Pc3/Tis21, belongs to the BTG/Tob family. This family has structurally related proteins that appear to have anti-proliferative properties. It has been demonstrated that BTG2 is p53-inducible and is involved in cell cycle control and cellular response to DNA damage (PMID: 8944033). As a transcriptional co-regulator, BTG2 has been shown to interact with CAF1 and POP2, and works as a co-activator of ERα-mediated transcription via a CCR4-like complex (PMID: 18974182).

## Notable Publications

Author	Pubmed ID	Journal	Application
Shi Li	31885582	J Oncol	WB
Chen-Song Huang	29098552	Dig Dis Sci	IHC
Aitao Nai	35372503	Front Mol Biosci	WB

## Storage

**Storage:**

Store at -20°C. Stable for one year after shipment.

**Storage Buffer:**

PBS with 0.02% sodium azide and 50% glycerol pH 7.3.

Aliquoting is unnecessary for -20°C storage

For technical support and original validation data for this product please contact:

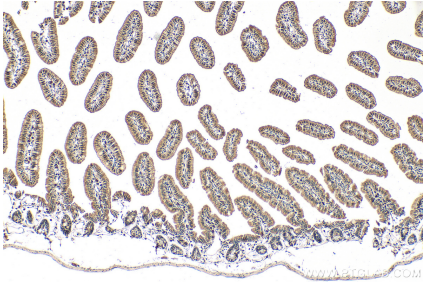
T: 4006900926

E: Proteintech-CN@ptglab.com

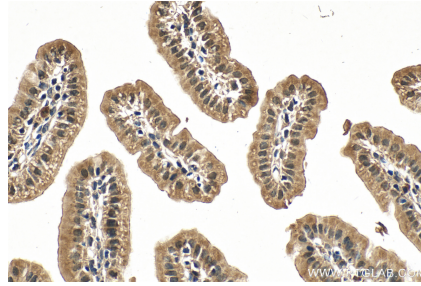
W: ptgcn.com

**This product is exclusively available under Proteintech Group brand and is not available to purchase from any other manufacturer.**

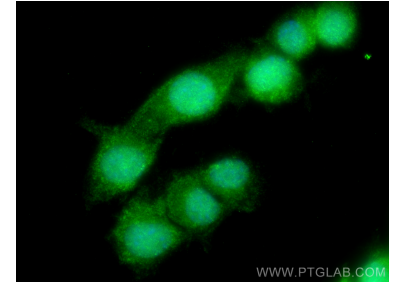
## Selected Validation Data



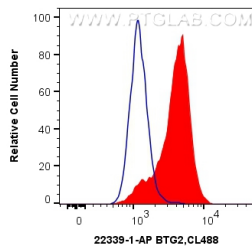
Immunohistochemical analysis of paraffin-embedded mouse small intestine tissue slide using 22339-1-AP (BTG2 antibody) at dilution of 1:200 (under 10x lens). Heat mediated antigen retrieval with Tris-EDTA buffer (pH 9.0).



Immunohistochemical analysis of paraffin-embedded mouse small intestine tissue slide using 22339-1-AP (BTG2 antibody) at dilution of 1:200 (under 40x lens). Heat mediated antigen retrieval with Tris-EDTA buffer (pH 9.0).



Immunofluorescent analysis of (4% PFA) fixed Neuro-2a cells using BTG2 antibody (22339-1-AP) at dilution of 1:400 and CoraLite@488-Conjugated AffiniPure Goat Anti-Rabbit IgG(H+L).



1X10<sup>6</sup> SH-SY5Y cells were intracellularly stained with 0.4 ug Anti-Human BTG2 (22339-1-AP) and CoraLite@488-Conjugated AffiniPure Goat Anti-Rabbit IgG(H+L) at dilution 1:1000 (red), or 0.4 ug Control Antibody. Cells were fixed with 4% PFA and permeabilized with Flow Cytometry Perm Buffer (PF00011-C).