

For Research Use Only

CCAR2 Polyclonal antibody

Catalog Number: 22638-1-AP

3 Publications



Basic Information

Catalog Number:

22638-1-AP

Size:

1000 µg/ml

Source:

Rabbit

Isotype:

IgG

Immunogen Catalog Number:

AG18374

GenBank Accession Number:

BC018269

GeneID (NCBI):

57805

UNIPROT ID:

Q8N163

Full Name:

KIAA1967

Calculated MW:

923 aa, 103 kDa

Observed MW:

130 kDa

Purification Method:

Antigen affinity purification

Recommended Dilutions:

WB 1:2000-1:16000

IP 0.5-4.0 µg for 1.0-3.0 mg of total protein lysate

IHC 1:20-1:200

IF 1:20-1:200

Applications

Tested Applications:

IF/ICC, IHC, IP, WB, ELISA

Cited Applications:

WB, IP, IF, RIP, IHC, CoIP

Species Specificity:

human, mouse, rat

Cited Species:

human, mouse

Note-IHC: suggested antigen retrieval with TE buffer pH 9.0; (*) Alternatively, antigen retrieval may be performed with citrate buffer pH 6.0

Positive Controls:

WB : HEK-293 cells, HeLa cells, MCF-7 cells, mouse brain tissue, rat brain tissue

IP : mouse brain tissue,

IHC : human breast cancer tissue, human colon cancer tissue, human pancreas cancer tissue

IF : HepG2 cells,

Background Information

Notable Publications

Author	Pubmed ID	Journal	Application
Ruibing Chen	33751109	Nucleic Acids Res	CoIP, RIP
Farshad Niri	34197713	Biochem Cell Biol	WB, IF
Qiangqiang Liu	35913115	Elife	WB, IHC, IP

Storage

Storage:

Store at -20°C. Stable for one year after shipment.

Storage Buffer:

PBS with 0.02% sodium azide and 50% glycerol pH 7.3.

Aliquoting is unnecessary for -20°C storage

For technical support and original validation data for this product please contact:

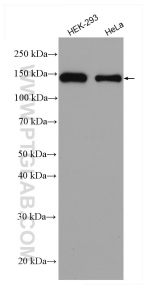
T: 4006900926

E: Proteintech-CN@ptglab.com

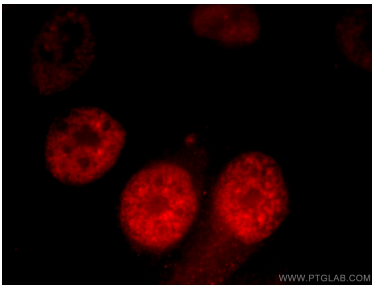
W: ptgcn.com

This product is exclusively available under Proteintech Group brand and is not available to purchase from any other manufacturer.

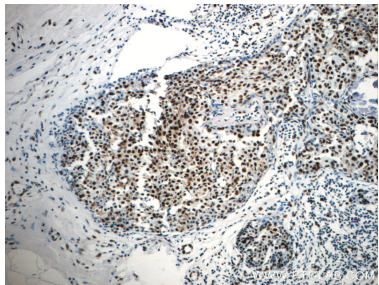
Selected Validation Data



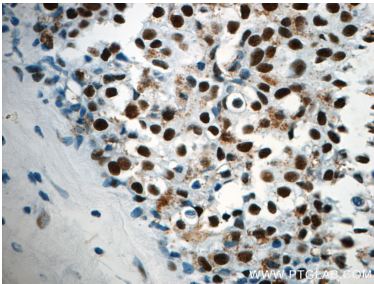
Various lysates were subjected to SDS PAGE followed by western blot with 22638-1-AP (CCAR2 antibody) at dilution of 1:8000 incubated at room temperature for 1.5 hours.



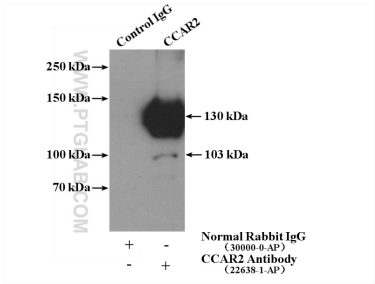
Immunofluorescent analysis of HepG2 cells, using KIAA1967 antibody 22638-1-AP at 1:50 dilution and Rhodamine-labeled goat anti-rabbit IgG (red).



Immunohistochemical analysis of paraffin-embedded human breast cancer slide using 22638-1-AP (CCAR2 antibody at dilution of 1:400.



Immunohistochemical analysis of paraffin-embedded human breast cancer slide using 22638-1-AP (CCAR2 antibody at dilution of 1:400.



IP result of anti-CCAR2 (IP:22638-1-AP, 4ug; Detection:22638-1-AP 1:1000) with mouse brain tissue lysate 4000ug.