

Alpha Actin Polyclonal antibody

Catalog Number: 23660-1-AP

102 Publications

Basic Information

Catalog Number:

23660-1-AP

Size:

600 µg/ml

Source:

Rabbit

Isotype:

IgG

Immunogen Catalog Number:

AG19151

GenBank Accession Number:

BC012597

GeneID (NCBI):

58

UNIPROT ID:

P68133

Full Name:

actin, alpha 1, skeletal muscle

Calculated MW:

42 kDa

Observed MW:

39-42 kDa

Purification Method:

Antigen Affinity purified

Recommended Dilutions:

IP 0.5-4.0 µg for 1.0-3.0 mg of total protein lysate

IHC 1:50-1:200

IF 1:200-1:800

Applications

Tested Applications:

IP, IF/ICC, IHC, ELISA

Cited Applications:

WB, IF, FC, IHC

Species Specificity:

human, mouse, rat

Cited Species:

human, rat, mouse, pig

Note-IHC: suggested antigen retrieval with TE buffer pH 9.0; (*) Alternatively, antigen retrieval may be performed with citrate buffer pH 6.0

Positive Controls:

IP: mouse skeletal muscle tissue,

IHC: human colon tissue, human heart tissue, human skeletal muscle tissue

IF: H9C2 cells,

Background Information

Notable Publications

Author	Pubmed ID	Journal	Application
Xu-Hong Fu	30224636	Acta Pharmacol Sin	WB
Ying Lin	32973959	Oncol Lett	WB
Qiong Fang	36094724	Metab Brain Dis	WB

Storage

Storage:

Store at -20°C. Stable for one year after shipment.

Storage Buffer:

PBS with 0.02% sodium azide and 50% glycerol pH 7.3.

Aliquoting is unnecessary for -20°C storage

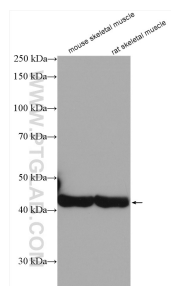
For technical support and original validation data for this product please contact:

T: 4006900926

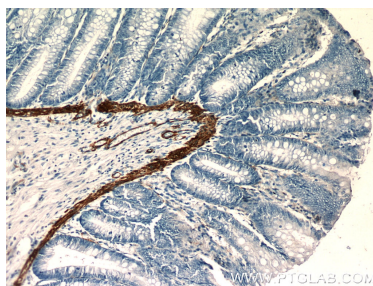
E: Proteintech-CN@ptglab.comW: ptgcn.com

This product is exclusively available under Proteintech Group brand and is not available to purchase from any other manufacturer.

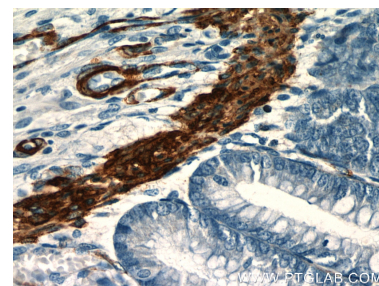
Selected Validation Data



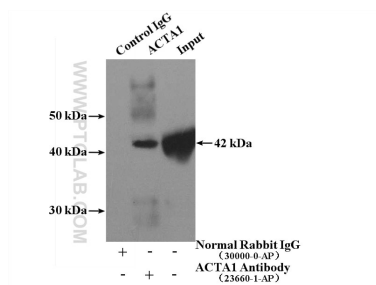
Various lysates were subjected to SDS PAGE followed by western blot with 23660-1-AP (alpha Actin antibody) at dilution of 1:150000 incubated at room temperature for 1.5 hours.



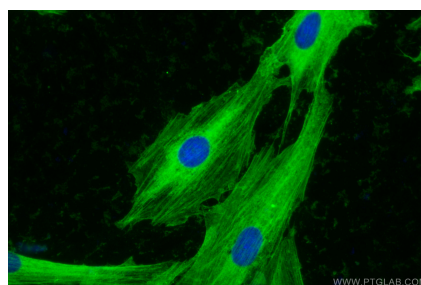
Immunohistochemical analysis of paraffin-embedded human colon slide using 23660-1-AP (alpha Actin antibody at dilution of 1:50.



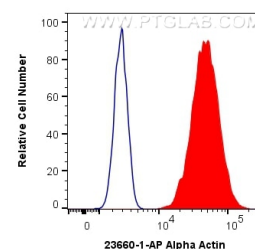
Immunohistochemical analysis of paraffin-embedded human colon slide using 23660-1-AP (alpha Actin antibody at dilution of 1:50.



IP result of anti-Alpha Actin (IP:23660-1-AP, 4ug; Detection:23660-1-AP 1:4000) with mouse skeletal muscle tissue lysate 2200ug.



Immunofluorescent analysis of (-20°C Ethanol) fixed H9C2 cells using Alpha Actin antibody (23660-1-AP) at dilution of 1:400 and CoraLite®488-Conjugated AffiniPure Goat Anti-Rabbit IgG(H+L) (SA00013-2).



1X10⁶ C2C12 cells were intracellularly stained with 0.4 ug Anti-Human Alpha Actin (23660-1-AP) and CoraLite®488-Conjugated AffiniPure Goat Anti-Rabbit IgG(H+L) at dilution 1:1000 (red), or 0.4 ug Isotype Control. Cells were fixed with 4% PFA and permeabilized with Flow Cytometry Perm Buffer (PF00011-C).