

MME,CD10 Polyclonal antibody

Catalog Number: 23782-1-AP

Basic Information

| | | |
|---|---|--|
| Catalog Number: 23782-1-AP | GenBank Accession Number: BC101632 | Purification Method: Antigen affinity purification |
| Size: 700 µg/ml | GeneID (NCBI): 4311 | Recommended Dilutions: IHC 1:20-1:200 IF 1:50-1:500 |
| Source: Rabbit | UNIPROT ID: P08473 | |
| Isotype: IgG | Full Name: membrane metallo-endopeptidase | |
| Immunogen Catalog Number: AG20634 | Calculated MW: 750 aa, 86 kDa | |

Applications

| | |
|---|---|
| Tested Applications: FC, IF-P, IHC, ELISA | Positive Controls: |
| Species Specificity: human | IHC : human kidney tissue, human renal cell carcinoma tissue |
| Note-IHC: suggested antigen retrieval with TE buffer pH 9.0; (*) Alternatively, antigen retrieval may be performed with citrate buffer pH 6.0 | IF : human kidney tissue, |

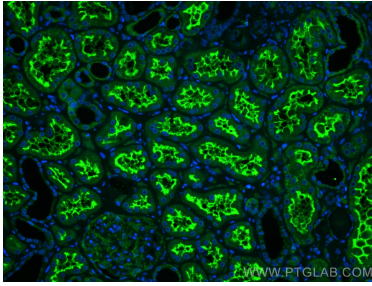
Background Information

MME is also names as neprilysin, CALLA, NEP, SFE, CD10 and belongs to the peptidase M13 family. It is a glycoprotein that is particularly abundant in kidney, where it is present on the brush border of proximal tubules and on glomerular epithelium. CD10 has been considered a useful marker in the diagnosis of renal carcinomas, because of its expression in clear cell and papillary renal cell carcinomas and its absence in chromophobe renal cell carcinomas (PMID:15286660).

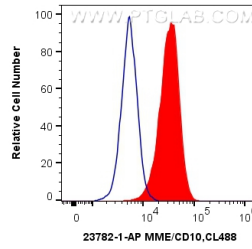
Storage

Storage:
Store at -20°C. Stable for one year after shipment.
Storage Buffer:
PBS with 0.02% sodium azide and 50% glycerol pH 7.3.
Aliquoting is unnecessary for -20°C storage

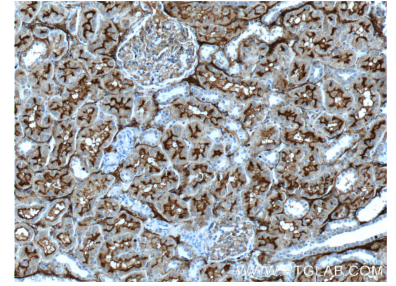
Selected Validation Data



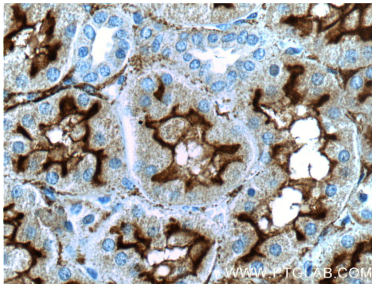
Immunofluorescent analysis of (4% PFA) fixed human kidney tissue using MME,CD10 antibody (23782-1-AP) at dilution of 1:200 and CoraLite®488-Conjugated AffiniPure Goat Anti-Rabbit IgG(H+L).



1X10⁶ Jurkat cells were intracellularly stained with 0.4 ug Anti-Human MME,CD10 (23782-1-AP) and CoraLite®488-Conjugated AffiniPure Goat Anti-Rabbit IgG(H+L) at dilution 1:1000 (red), or 0.4 ug Isotype Control. Cells were fixed with 4% PFA and permeabilized with Flow Cytometry Perm Buffer (PF00011-C).



Immunohistochemical analysis of paraffin-embedded human kidney tissue slide using 23782-1-AP (CD10,MME Antibody) at dilution of 1:200 (under 10x lens).



Immunohistochemical analysis of paraffin-embedded human kidney tissue slide using 23782-1-AP (CD10,MME Antibody) at dilution of 1:200 (under 40x lens).