

BCHE Polyclonal antibody

Catalog Number: 23854-1-AP

3 Publications

Basic Information

Catalog Number:

23854-1-AP

Size:

1000 µg/ml

Source:

Rabbit

Isotype:

IgG

Immunogen Catalog Number:

AG20888

GenBank Accession Number:

BC008396

GeneID (NCBI):

590

UNIPROT ID:

P06276

Full Name:

butyrylcholinesterase

Calculated MW:

602 aa, 68 kDa

Observed MW:

85-90 kDa

Purification Method:

Antigen Affinity purified

Recommended Dilutions:

WB 1:500-1:1000

IHC 1:20-1:200

IF/ICC 1:50-1:500

Applications

Tested Applications:

WB, IF/ICC, IHC, ELISA

Cited Applications:

WB, IF, IHC

Species Specificity:

human

Cited Species:

human, goat

Note-IHC: suggested antigen retrieval with **TE buffer pH 9.0; (*) Alternatively, antigen retrieval may be performed with citrate buffer pH 6.0**

Positive Controls:

WB : HeLa cells, HEK-293 cells

IHC : human liver tissue,

IF/ICC : HeLa cells,

Background Information

BCHE(butyrylcholinesterase) is an enzyme expressed in most human tissues. It may have a greater role in cholinergic transmission than previously surmised, making BChE inhibition an important therapeutic goal in Alzheimer's disease(PMID:11848688). BCHE is also named as CHE1 and belongs to the type-B carboxylesterase/lipase family. This is a glycoprotein with the molecular weight from 68 kDa to 90 kDa.

Notable Publications

Author	Pubmed ID	Journal	Application
Yuan Yuan Li	30899600	Nat Biomed Eng	WB
Shibo Wang	38357546	Front Immunol	WB,IHC
Jia-Hao Wang	37508483	Cells	WB,IF

Storage

Storage:

Store at -20°C. Stable for one year after shipment.

Storage Buffer:

PBS with 0.02% sodium azide and 50% glycerol pH 7.3.

Aliquoting is unnecessary for -20°C storage

For technical support and original validation data for this product please contact:

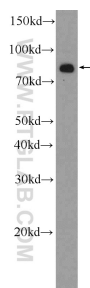
T: 4006900926

E: Proteintech-CN@ptglab.com

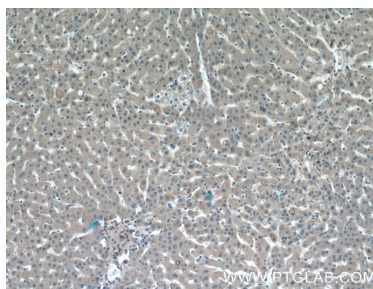
W: ptgcn.com

This product is exclusively available under Proteintech Group brand and is not available to purchase from any other manufacturer.

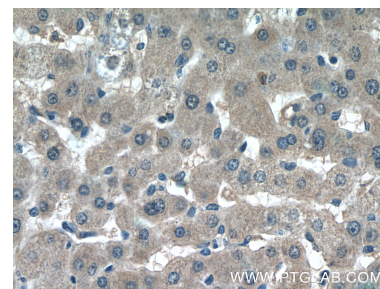
Selected Validation Data



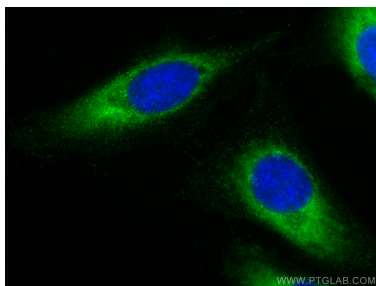
HeLa cells were subjected to SDS PAGE followed by western blot with 23854-1-AP (BCHE Antibody) at dilution of 1:600 incubated at room temperature for 1.5 hours.



Immunohistochemical analysis of paraffin-embedded human liver tissue slide using 23854-1-AP (BCHE Antibody) at dilution of 1:50 (under 10x lens).



Immunohistochemical analysis of paraffin-embedded human liver tissue slide using 23854-1-AP (BCHE Antibody) at dilution of 1:50 (under 40x lens).



Immunofluorescent analysis of (-20°C Methanol) fixed HeLa cells using BCHE antibody (23854-1-AP) at dilution of 1:200 and CoraLite®488-Conjugated AffiniPure Goat Anti-Rabbit IgG(H+L).