

# Alpha Internexin Polyclonal antibody

Catalog Number: 23881-1-AP

## Basic Information

**Catalog Number:**

23881-1-AP

**Size:**

400 µg/ml

**Source:**

Rabbit

**Isotype:**

IgG

**Immunogen Catalog Number:**

AG20844

**GenBank Accession Number:**

BC006359

**GeneID (NCBI):**

9118

**UNIPROT ID:**

Q16352

**Full Name:**

internexin neuronal intermediate  
filament protein, alpha

**Calculated MW:**

55 kDa

**Observed MW:**

66-68 kDa

**Purification Method:**

Antigen affinity purification

**Recommended Dilutions:**

WB 1:1000-1:5000

IHC 1:50-1:500

## Applications

**Tested Applications:**

IHC, WB, ELISA

**Species Specificity:**

human, mouse, rat

**Note-IHC:** suggested antigen retrieval with  
**TE buffer pH 9.0; (\*) Alternatively, antigen  
retrieval may be performed with citrate  
buffer pH 6.0**

**Positive Controls:**

**WB :** mouse brain tissue, rat brain tissue

**IHC :** human pancreas cancer tissue, human brain  
tissue

## Background Information

### Storage

**Storage:**

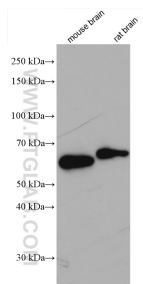
Store at -20°C. Stable for one year after shipment.

**Storage Buffer:**

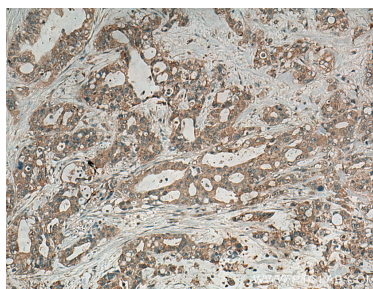
PBS with 0.02% sodium azide and 50% glycerol pH 7.3.

Aliquoting is unnecessary for -20°C storage

## Selected Validation Data



Various lysates were subjected to SDS PAGE followed by western blot with 23881-1-AP (alpha-internexin antibody) at dilution of 1:4000 incubated at room temperature for 1.5 hours.



Immunohistochemical analysis of paraffin-embedded human pancreas cancer tissue slide using 23881-1-AP (alpha-internexin antibody) at dilution of 1:200 (under 10x lens). Heat mediated antigen retrieval with Tris-EDTA buffer (pH 9.0).