

For Research Use Only

MEFV Polyclonal antibody

Catalog Number: 24280-1-AP **3 Publications**



Basic Information

Catalog Number: 24280-1-AP	GenBank Accession Number: BC101511	Purification Method: Antigen affinity purification
Size: 500 µg/ml	GeneID (NCBI): 4210	Recommended Dilutions: WB 1:1000-1:5000 IF 1:200-1:800
Source: Rabbit	UNIPROT ID: O15553	
Isotype: IgG	Full Name: Mediterranean fever	
Immunogen Catalog Number: AG18000	Calculated MW: 781 aa, 86 kDa	
	Observed MW: 86 kDa	

Applications

Tested Applications: FC, IF/ICC, WB, ELISA	Positive Controls: WB : THP-1 cells, human plasma IF : A431 cells,
Cited Applications: FC, IF, IP, WB	
Species Specificity: human	
Cited Species: human, rat, mouse	

Background Information

MEFV, a gene encoding a protein of unknown function, is the genetic cause of Familial Mediterranean fever (FMF), a recessively inherited disorder characterized by recurring attacks of fever and serositis. Recently mutation of MEFV has been reported to cause autoinflammatory disease distinct from FMF.

Notable Publications

Author	Pubmed ID	Journal	Application
Matthew S J Mangan	36342970	PLoS Biol	FC
Xin Jin	31410136	Exp Ther Med	IF
Nivedita Hegdekar	36652438	Autophagy	WB,IP

Storage

Storage:
Store at -20°C. Stable for one year after shipment.
Storage Buffer:
PBS with 0.02% sodium azide and 50% glycerol pH 7.3.
Aliquoting is unnecessary for -20°C storage

For technical support and original validation data for this product please contact:

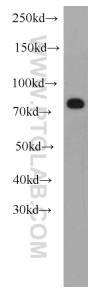
T: 4006900926

E: Proteintech-CN@ptglab.com

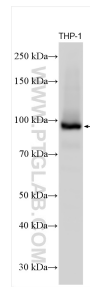
W: ptgcn.com

This product is exclusively available under Proteintech Group brand and is not available to purchase from any other manufacturer.

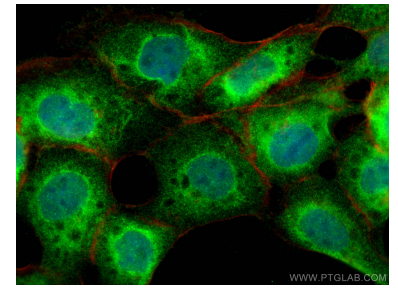
Selected Validation Data



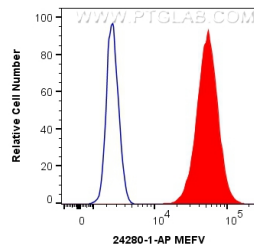
human plasma were subjected to SDS PAGE followed by western blot with 24280-1-AP (MEFV Antibody) at dilution of 1:1000 incubated at room temperature for 1.5 hours.



THP-1 cells were subjected to SDS PAGE followed by western blot with 24280-1-AP (MEFV antibody) at dilution of 1:2500 incubated at room temperature for 1.5 hours.



Immunofluorescent analysis of (4% PFA) fixed A431 cells using MEFV antibody (24280-1-AP) at dilution of 1:400 and CoraLite®488-Conjugated AffiniPure Goat Anti-Rabbit IgG(H+L), CL594-phalloidin (red).



1X10⁶ A431 cells were intracellularly stained with 0.4 ug Anti-Human MEFV (24280-1-AP) and CoraLite®488-Conjugated AffiniPure Goat Anti-Rabbit IgG(H+L) at dilution 1:1000 (red), or 0.4 ug Isotype Control. Cells were fixed and permeabilized with Transcription Factor Staining Buffer Kit (PF00011).