

LRRC18 Polyclonal antibody

Catalog Number: 24571-1-AP

Basic Information

Catalog Number:

24571-1-AP

Size:

600 µg/ml

Source:

Rabbit

Isotype:

IgG

Immunogen Catalog Number:

AG20996

GenBank Accession Number:

BC036722

GeneID (NCBI):

474354

UNIPROT ID:

Q8N456

Full Name:

leucine rich repeat containing 18

Calculated MW:

261 aa, 30 kDa

Observed MW:

30 kDa

Purification Method:

Antigen affinity purification

Recommended Dilutions:

WB 1:500-1:1000

IP 0.5-4.0 µg for 1.0-3.0 mg of total protein lysate

IHC 1:20-1:200

Applications

Tested Applications:

IHC, IP, WB, ELISA

Species Specificity:

human, mouse

Note-IHC: suggested antigen retrieval with TE buffer pH 9.0; (*) Alternatively, antigen retrieval may be performed with citrate buffer pH 6.0

Positive Controls:

WB : mouse testis tissue,

IP : mouse testis tissue,

IHC : human testis tissue,

Background Information

Leucine rich repeat containing protein 18 (LRRC18) encodes a 261 amino-acids protein (29.6 kDa), which contains 7 leucine rich repeat and belongs to LRR superfamily. The function of protein is still non-known, but it may be involved in the regulation of spermatogenesis and sperm maturation. The protein localizes in cytoplasm and express in some male reproduction tissues.

Storage

Storage:

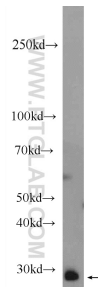
Store at -20°C. Stable for one year after shipment.

Storage Buffer:

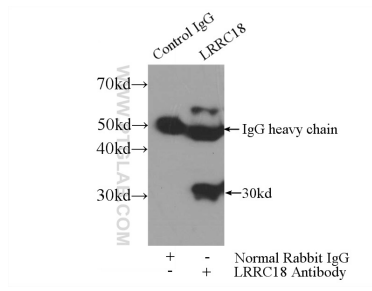
PBS with 0.02% sodium azide and 50% glycerol pH 7.3.

Aliquoting is unnecessary for -20°C storage

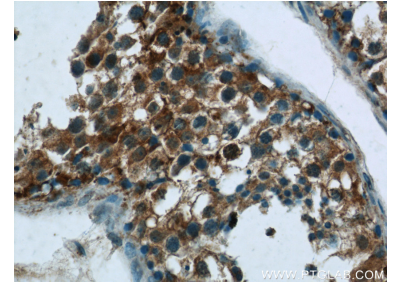
Selected Validation Data



mouse testis tissue were subjected to SDS PAGE followed by western blot with 24571-1-AP (LRRC18 Antibody) at dilution of 1:600 incubated at room temperature for 1.5 hours.



IP result of anti-LRRC18 (IP:24571-1-AP, 3ug; Detection:24571-1-AP 1:500) with mouse testis tissue lysate 4000ug.



Immunohistochemical analysis of paraffin-embedded human testis tissue slide using 24571-1-AP (LRRC18 Antibody) at dilution of 1:50 (under 40x lens).