

For Research Use Only

# ACE Polyclonal antibody

Catalog Number: 24743-1-AP **20 Publications**



## Basic Information

**Catalog Number:**

24743-1-AP

**Size:**

600 µg/ml

**Source:**

Rabbit

**Isotype:**

IgG

**Immunogen Catalog Number:**

AG20654

**GenBank Accession Number:**

BC036375

**GeneID (NCBI):**

1636

**UNIPROT ID:**

P12821

**Full Name:**

angiotensin I converting enzyme  
(peptidyl-dipeptidase A) 1

**Calculated MW:**

150 kDa

**Observed MW:**

170 kDa

**Purification Method:**

Antigen affinity purification

**Recommended Dilutions:**

WB 1:500-1:2000

IP 0.5-4.0 µg for 1.0-3.0 mg of total  
protein lysate

IHC 1:50-1:500

## Applications

**Tested Applications:**

IHC, IP, WB, ELISA

**Cited Applications:**

WB, IF, IHC

**Species Specificity:**

human, mouse, rat

**Cited Species:**

human, rat, mouse, bovine

**Positive Controls:**

WB: mouse heart tissue,

IP: mouse heart tissue,

IHC: human lung tissue, mouse lung tissue

**Note-IHC: suggested antigen retrieval with  
TE buffer pH 9.0; (\*) Alternatively, antigen  
retrieval may be performed with citrate  
buffer pH 6.0**

## Background Information

ACE (Angiotensin-converting enzyme) is also named as DCP, DCP1 and belongs to the peptidase M2 family. It is involved in catalyzing the conversion of angiotensin I into a physiologically active peptide angiotensin II. ACE also has a glycosidase activity which releases GPI-anchored proteins from the membrane by cleaving the mannose linkage in the GPI moiety. It has 4 isoforms produced by alternative splicing. The full length protein has 15 glycosylation sites and it can show a molecular weight of 170 kDa (PMID:16804085).

## Notable Publications

Author	Pubmed ID	Journal	Application
Boyu Yuan	36306919	Arch Biochem Biophys	WB
Donatella Treppiedi	35712238	Front Endocrinol (Lausanne)	IF
Nan Wu	32121598	Antioxidants (Basel)	WB

## Storage

**Storage:**

Store at -20°C. Stable for one year after shipment.

**Storage Buffer:**

PBS with 0.02% sodium azide and 50% glycerol pH 7.3.

Aliquoting is unnecessary for -20°C storage

For technical support and original validation data for this product please contact:

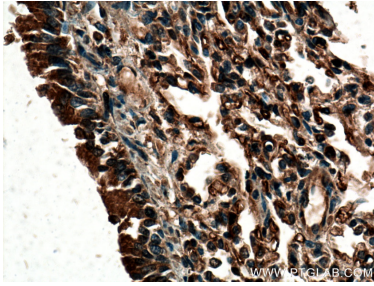
T: 4006900926

E: Proteintech-CN@ptglab.com

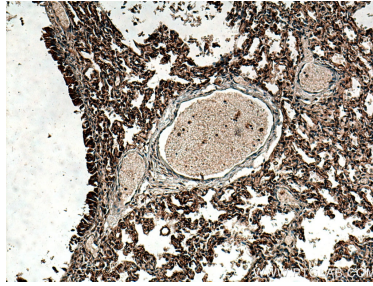
W: ptgcn.com

**This product is exclusively available under Proteintech Group brand and is not available to purchase from any other manufacturer.**

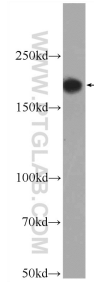
## Selected Validation Data



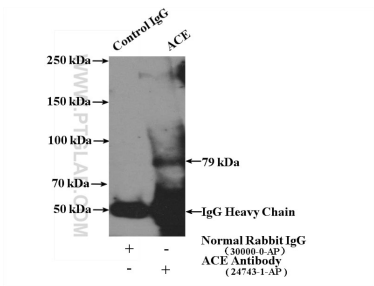
Immunohistochemical analysis of paraffin-embedded human lung tissue slide using 24743-1-AP (ACE antibody) at dilution of 1:200 (under 40x lens). Heat mediated antigen retrieval with Tris-EDTA buffer (pH 9.0).



Immunohistochemical analysis of paraffin-embedded human lung tissue slide using 24743-1-AP (ACE antibody) at dilution of 1:200 (under 10x lens). Heat mediated antigen retrieval with Tris-EDTA buffer (pH 9.0).



mouse heart tissue were subjected to SDS PAGE followed by western blot with 24743-1-AP (ACE Antibody) at dilution of 1:1000 incubated at room temperature for 1.5 hours.



IP result of anti-ACE (IP:24743-1-AP, 4ug; Detection:24743-1-AP 1:1000) with mouse heart tissue lysate 4000ug.