

# INSIG2 Polyclonal antibody

Catalog Number: 24766-1-AP

Featured Product

12 Publications

## Basic Information

**Catalog Number:**

24766-1-AP

**Size:**

1000 µg/ml

**Source:**

Rabbit

**Isotype:**

IgG

**Immunogen Catalog Number:**

AG14072

**GenBank Accession Number:**

BC022475

**GeneID (NCBI):**

51141

**UNIPROT ID:**

Q9Y5U4

**Full Name:**

INSIG 2

**Calculated MW:**

225 aa, 25 kDa

**Observed MW:**

30 kDa

**Purification Method:**

Antigen affinity purification

**Recommended Dilutions:**

WB 1:500-1:2000

IP 0.5-4.0 µg for 1.0-3.0 mg of total protein lysate

IHC 1:20-1:200

IF 1:10-1:100

## Applications

**Tested Applications:**

IF/ICC, IHC, IP, WB, ELISA

**Cited Applications:**

WB, IP, IF, IHC

**Species Specificity:**

human, mouse, rat

**Cited Species:**

human, rat, mouse

**Note-IHC: suggested antigen retrieval with TE buffer pH 9.0; (\*) Alternatively, antigen retrieval may be performed with citrate buffer pH 6.0**

**Positive Controls:**

WB : rat liver tissue, A549 cells, SGC-7901 cells

IP : mouse liver tissue,

IHC : human liver tissue,

IF : HepG2 cells,

## Background Information

INSIG2 mediates feedback control of cholesterol synthesis by controlling SCAP and HMGCR. INSIG2 may bring HMGCR into ubiquitin-mediated proteasomal degradation. Insig2 protein are endoplasmic reticulum proteins that block the processing of sterol regulatory element binding proteins (SREBPs) by binding to SREBP cleavage-activating protein (SCAP), and thus prevent SCAP from escorting SREBPs to the Golgi. INSIG-2 may play an important role in therapy of hypercholesterolemia.

## Notable Publications

Author	Pubmed ID	Journal	Application
Pei-Ming Yang	31720078	Am J Cancer Res	WB
Han Zeng	34974159	Mol Metab	WB, IF
Yingchen Qian	36515824	Mol Biol Rep	IHC, WB

## Storage

**Storage:**

Store at -20°C. Stable for one year after shipment.

**Storage Buffer:**

PBS with 0.02% sodium azide and 50% glycerol pH 7.3.

Aliquoting is unnecessary for -20°C storage

For technical support and original validation data for this product please contact:

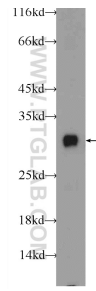
T: 4006900926

E: Proteintech-CN@ptglab.com

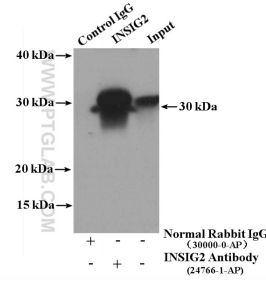
W: ptgcn.com

This product is exclusively available under Proteintech Group brand and is not available to purchase from any other manufacturer.

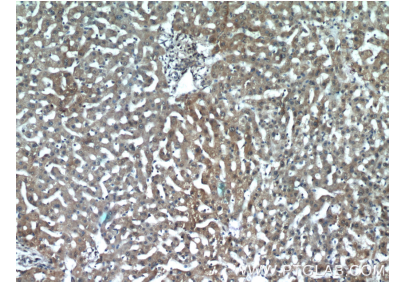
## Selected Validation Data



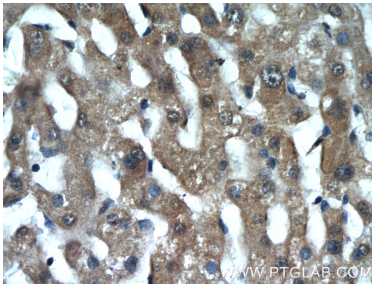
rat liver tissue were subjected to SDS PAGE followed by western blot with 24766-1-AP (INSIG2 Antibody) at dilution of 1:1000 incubated at room temperature for 1.5 hours.



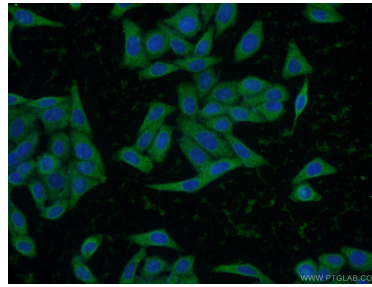
IP result of anti-INSIG2 (IP:24766-1-AP, 4ug; Detection:24766-1-AP 1:500) with mouse liver tissue lysate 3600ug.



Immunohistochemical analysis of paraffin-embedded human liver tissue slide using 24766-1-AP (INSIG2 Antibody) at dilution of 1:50 (under 10x lens).



Immunohistochemical analysis of paraffin-embedded human liver tissue slide using 24766-1-AP (INSIG2 Antibody) at dilution of 1:50 (under 40x lens).



Immunofluorescent analysis of HepG2 cells using 24766-1-AP (INSIG2 antibody) at dilution of 1:25 and Alexa Fluor 488-conjugated AffiniPure Goat Anti-Rabbit IgG(H+L).