

For Research Use Only

# LRP5 Polyclonal antibody

Catalog Number: 24899-1-AP

10 Publications



## Basic Information

Catalog Number:

24899-1-AP

Concentration:

500 µg/ml

Source:

Rabbit

Isotype:

IgG

Immunogen Catalog Number:

AG19034

GenBank Accession Number:

BC150595

GeneID (NCBI):

4041

UNIPROT ID:

O75197

Full Name:

low density lipoprotein receptor-related protein 5

Calculated MW:

1615 aa, 179 kDa

Observed MW:

180-200 kDa

Purification Method:

Antigen affinity purification

Recommended Dilutions:

WB: 1:500-1:1000

IHC: 1:50-1:500

IF/ICC: 1:50-1:500

## Applications

Tested Applications:

WB, IHC, IF/ICC, ELISA

Cited Applications:

WB, IHC, IF, IP

Species Specificity:

human, mouse

Cited Species:

human, mouse, rat

**Note-IHC: suggested antigen retrieval with TE buffer pH 9.0; (\*) Alternatively, antigen retrieval may be performed with citrate buffer pH 6.0**

Positive Controls:

WB: HeLa cells,

IHC: mouse lung tissue, human hepatocirrhosis tissue, human liver cancer tissue

IF/ICC: HeLa cells,

## Background Information

Low-density lipoprotein receptor-related protein 5 (LRP5) is a single-pass type I membrane protein with EGF-like and LDLR domains in the extracellular domain. LRP5 and LRP6 act as coreceptors with Frizzled for Wnt. The complex of Wnt-Fzd-LRP5-LRP6 triggers beta-catenin signaling through inducing aggregation of receptor-ligand complexes into ribosome-sized signalsomes. LRP5 plays a key role in skeletal homeostasis and many bone density related diseases are caused by mutations in LRP5 gene.

## Notable Publications

Author	Pubmed ID	Journal	Application
Takafumi Yayama	29102319	J Orthop Sci	IHC
Yifeng Zheng	34912211	Front Pharmacol	WB,IHC,IF,IP
Ying Xu	34425061	Pharm Biol	WB

## Storage

Storage:

Store at -20°C. Stable for one year after shipment.

Storage Buffer:

PBS with 0.02% sodium azide and 50% glycerol, pH7.3

Aliquoting is unnecessary for -20°C storage

For technical support and original validation data for this product please contact:

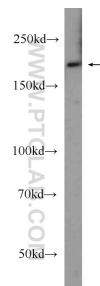
T: 4006900926

E: [Proteintech-CN@ptglab.com](mailto:Proteintech-CN@ptglab.com)

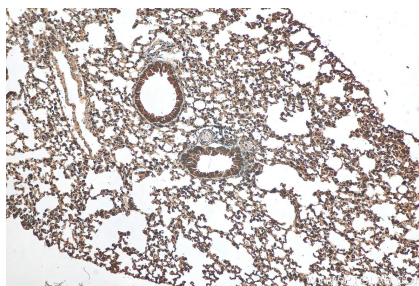
W: [ptgcn.com](http://ptgcn.com)

**This product is exclusively available under Proteintech Group brand and is not available to purchase from any other manufacturer.**

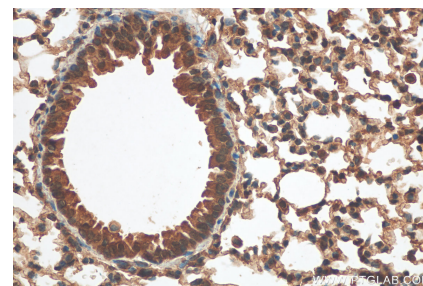
## Selected Validation Data



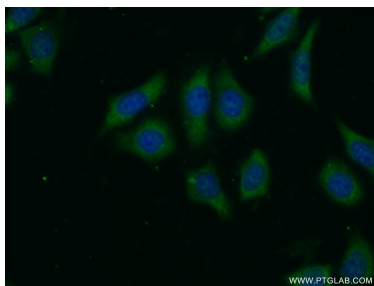
HeLa cells were subjected to SDS PAGE followed by western blot with 24899-1-AP (LRP5 Antibody) at dilution of 1:600 incubated at room temperature for 1.5 hours.



Immunohistochemical analysis of paraffin-embedded mouse lung tissue slide using 24899-1-AP (LRP5 antibody) at dilution of 1:200 (under 10x lens). Heat mediated antigen retrieval with Tris-EDTA buffer (pH 9.0).



Immunohistochemical analysis of paraffin-embedded mouse lung tissue slide using 24899-1-AP (LRP5 antibody) at dilution of 1:200 (under 40x lens). Heat mediated antigen retrieval with Tris-EDTA buffer (pH 9.0).



Immunofluorescent analysis of (-20°C Ethanol) fixed HeLa cells using 24899-1-AP (LRP5 antibody) at dilution of 1:50 and Alexa Fluor 488-conjugated Goat Anti-Rabbit IgG(H+L).