

For Research Use Only

# SENP1 Polyclonal antibody

Catalog Number: 25349-1-AP

Featured Product

12 Publications



## Basic Information

**Catalog Number:**

25349-1-AP

**Size:**

450 µg/ml

**Source:**

Rabbit

**Isotype:**

IgG

**Immunogen Catalog Number:**

AG18028

**GenBank Accession Number:**

BC045639

**GeneID (NCBI):**

29843

**Full Name:**

SUMO1/sentrin specific peptidase 1

**Calculated MW:**

644 aa, 73 kDa

**Observed MW:**

73-74 kDa

**Purification Method:**

Antigen affinity purification

**Recommended Dilutions:**

WB 1:1000-1:8000

IP 0.5-4.0 µg for 1.0-3.0 mg of total

protein lysate

IHC 1:20-1:200

## Applications

**Tested Applications:**

IHC, IP, WB, ELISA

**Cited Applications:**

ColP, IHC, WB

**Species Specificity:**

human, mouse, rat

**Cited Species:**

human, mouse

**Note-IHC: suggested antigen retrieval with TE buffer pH 9.0; (\*) Alternatively, antigen retrieval may be performed with citrate buffer pH 6.0**

**Positive Controls:**

**WB:** HL-60 cells, HeLa cells, HepG2 cells, Jurkat cells, mouse testis tissue, rat testis tissue

**IP:** Jurkat cells,

**IHC:** human ovary tissue, human liver tissue, human testis tissue

## Background Information

SENP1, Sentrin-specific protease 1, is a cysteine protease that specifically targets members of the small ubiquitin-like modifier (SUMO) protein family. SENP1 catalyzes two functions in the SUMO pathway (PMID: 29506078). The first is the hydrolysis of an alpha-linked peptide bond at the C-terminal end of the small ubiquitin-like modifier (SUMO) propeptides. The second is the deconjugation of SUMO1, SUMO2 and SUMO3 from targeted proteins (PMID: 16253240). SENP1 is located in the nucleus and cytosol.

## Notable Publications

Author	Pubmed ID	Journal	Application
Fang Xianjun	34049792	J Pharmacol Sci	WB
Mingyue Zhou	33686713	Cancer Med	WB, IHC
Chunyang Wang	30745829	Int J Biol Sci	WB

## Storage

**Storage:**

Store at -20°C. Stable for one year after shipment.

**Storage Buffer:**

PBS with 0.02% sodium azide and 50% glycerol pH 7.3.

Aliquoting is unnecessary for -20°C storage

For technical support and original validation data for this product please contact:

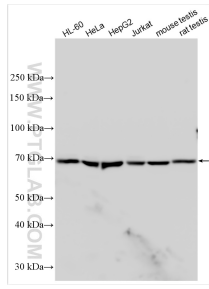
T: 4006900926

E: Proteintech-CN@ptglab.com

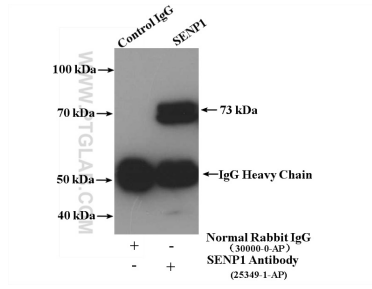
W: ptgcn.com

**This product is exclusively available under Proteintech Group brand and is not available to purchase from any other manufacturer.**

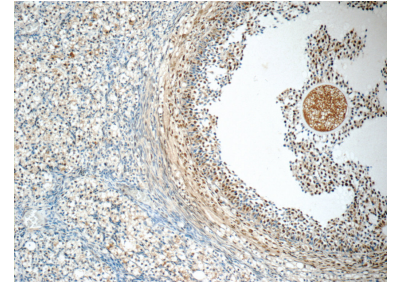
## Selected Validation Data



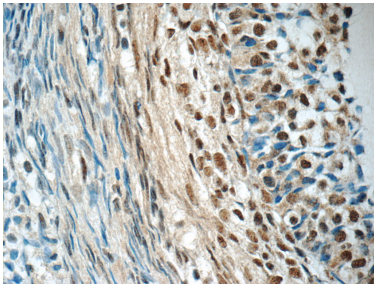
Various lysates were subjected to SDS PAGE followed by western blot with 25349-1-AP (SEN1 antibody) at dilution of 1:4000 incubated at room temperature for 1.5 hours.



IP result of anti-SEN1 (IP:25349-1-AP, 4 $\mu$ g; Detection:25349-1-AP 1:1000) with Jurkat cells lysate 3600 $\mu$ g.



Immunohistochemical analysis of paraffin-embedded human ovary tissue slide using 25349-1-AP (SEN1 Antibody) at dilution of 1:50 (under 10 $\times$  lens).



Immunohistochemical analysis of paraffin-embedded human ovary tissue slide using 25349-1-AP (SEN1 Antibody) at dilution of 1:50 (under 40 $\times$  lens).