

For Research Use Only

# CHCHD3 Polyclonal antibody

Catalog Number: 25625-1-AP **25 Publications**



## Basic Information

<b>Catalog Number:</b> 25625-1-AP	<b>GenBank Accession Number:</b> BC014839	<b>Purification Method:</b> Antigen affinity purification
<b>Size:</b> 600 µg/ml	<b>GeneID (NCBI):</b> 54927	<b>Recommended Dilutions:</b> WB 1:4000-1:12000
<b>Source:</b> Rabbit	<b>UNIPROT ID:</b> Q9NX63	IP 0.5-4.0 µg for 1.0-3.0 mg of total protein lysate
<b>Isotype:</b> IgG	<b>Full Name:</b> coiled-coil-helix-coiled-coil-helix domain containing 3	IHC 1:50-1:500
<b>Immunogen Catalog Number:</b> AG22579	<b>Calculated MW:</b> 227 aa, 26 kDa	IF 1:50-1:500
	<b>Observed MW:</b> 26 kDa	

## Applications

**Tested Applications:**  
IF/ICC, IHC, IP, WB, ELISA

**Cited Applications:**  
IF, WB

**Species Specificity:**  
human, mouse

**Cited Species:**  
human, mouse

**Note-IHC: suggested antigen retrieval with TE buffer pH 9.0; (\*) Alternatively, antigen retrieval may be performed with citrate buffer pH 6.0**

**Positive Controls:**

**WB:** HEK-293 cells, human placenta tissue, A431 cells, mouse liver tissue, HeLa cells, Jurkat cells, NIH/3T3 cells, NIH/3T3 cells.

**IP:** HeLa cells,

**IHC:** human liver tissue, human heart tissue

**IF:** HepG2 cells,

## Background Information

CHCHD3, initially identified as a substrate for cAMP-dependent protein kinase (PKA), is a ubiquitous protein in the mitochondria and plays a prominent role in maintaining cristae integrity and mitochondrial function. In mitochondria, ChChd3 is predominantly localized to the inner membrane (IM), facing toward the intermembrane space (IMS), and is part of the large protein complex now called as MINOS (mitochondrial inner membrane organizing system), or MIB (mitochondrial intermembrane space bridging). CHCHD3 is highly conserved in mammals with human and mouse protein sharing 92% sequence similarity.

## Notable Publications

Author	Pubmed ID	Journal	Application
Yutong Shang	36104602	Acta Neuropathol	WB
Takahiro Yoshinaka	31522117	iScience	WB
Foteini Violitzi	31550165	J Proteome Res	WB

## Storage

**Storage:**

Store at -20°C. Stable for one year after shipment.

**Storage Buffer:**

PBS with 0.02% sodium azide and 50% glycerol pH 7.3.

Aliquoting is unnecessary for -20°C storage

For technical support and original validation data for this product please contact:

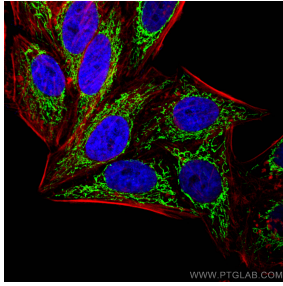
T: 4006900926

E: Proteintech-CN@ptglab.com

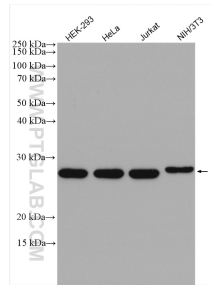
W: ptgcn.com

**This product is exclusively available under Proteintech Group brand and is not available to purchase from any other manufacturer.**

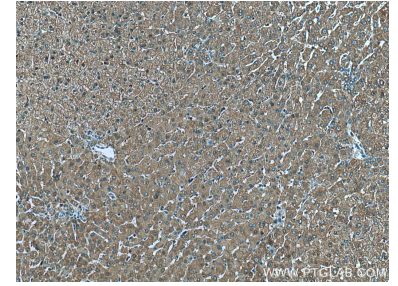
## Selected Validation Data



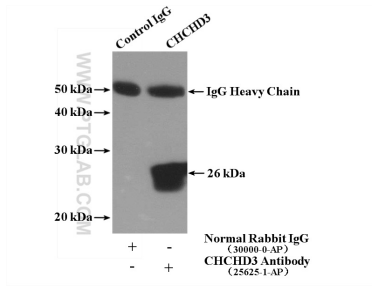
Immunofluorescent analysis of (4% PFA) fixed HepG2 cells using CHCHD3 antibody (25625-1-AP) at dilution of 1:200 and CoraLite®488-Conjugated AffiniPure Goat Anti-Rabbit IgG(H+L), CL594-Phalloidin (red).



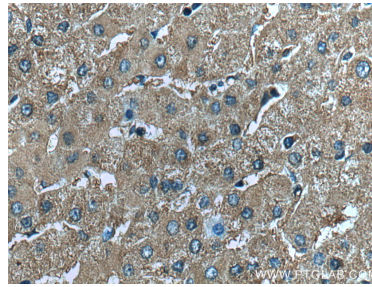
Various lysates were subjected to SDS PAGE followed by western blot with 25625-1-AP (CHCHD3 antibody) at dilution of 1:8000 incubated at room temperature for 1.5 hours.



Immunohistochemical analysis of paraffin-embedded human liver tissue slide using 25625-1-AP (CHCHD3 antibody) at dilution of 1:200 (under 10x lens). Heat mediated antigen retrieval with Tris-EDTA buffer (pH 9.0).



IP result of anti-CHCHD3 (IP:25625-1-AP, 4ug; Detection:25625-1-AP 1:1000) with HeLa cells lysate 2600ug.



Immunohistochemical analysis of paraffin-embedded human liver tissue slide using 25625-1-AP (CHCHD3 antibody) at dilution of 1:200 (under 40x lens). Heat mediated antigen retrieval with Tris-EDTA buffer (pH 9.0).