

For Research Use Only

# MTR Polyclonal antibody

Catalog Number: 25896-1-AP **10 Publications**



## Basic Information

<b>Catalog Number:</b> 25896-1-AP	<b>GenBank Accession Number:</b> BC130616	<b>Purification Method:</b> Antigen affinity purification
<b>Size:</b> 500 µg/ml	<b>GeneID (NCBI):</b> 4548	<b>Recommended Dilutions:</b> WB 1:500-1:1000 IHC 1:20-1:200 IF 1:20-1:200
<b>Source:</b> Rabbit	<b>UNIPROT ID:</b> Q99707	
<b>Isotype:</b> IgG	<b>Full Name:</b> 5-methyltetrahydrofolate- homocysteine methyltransferase	
<b>Immunogen Catalog Number:</b> AG23156	<b>Observed MW:</b> 140 kDa	

## Applications

<b>Tested Applications:</b> IF/ICC, IHC, WB, ELISA	<b>Positive Controls:</b> WB : A375 cells, mouse pancreas tissue IHC : human pancreas tissue, human heart tissue IF : A375 cells,
<b>Cited Applications:</b> WB, IHC	
<b>Species Specificity:</b> human, mouse	
<b>Cited Species:</b> human, mouse	
<b>Note-IHC: suggested antigen retrieval with TE buffer pH 9.0; (*) Alternatively, antigen retrieval may be performed with citrate buffer pH 6.0</b>	

## Background Information

### Notable Publications

Author	Pubmed ID	Journal	Application
Li Cui	34533844	J Pineal Res	WB
Jiajun Zhu	31607565	Cell Metab	
Jonathan M Ghergurovich	34799699	Nat Metab	WB

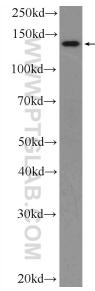
## Storage

**Storage:**  
Store at -20°C. Stable for one year after shipment.  
**Storage Buffer:**  
PBS with 0.02% sodium azide and 50% glycerol pH 7.3.  
Aliquoting is unnecessary for -20°C storage

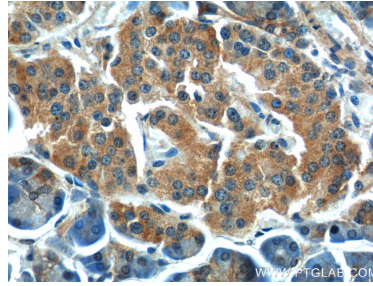
For technical support and original validation data for this product please contact:  
T: 4006900926 E: Proteintech-CN@ptglab.com W: ptgcn.com

This product is exclusively available under Proteintech Group brand and is not available to purchase from any other manufacturer.

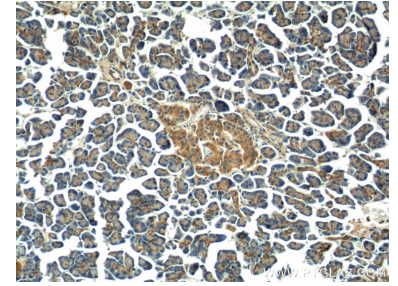
## Selected Validation Data



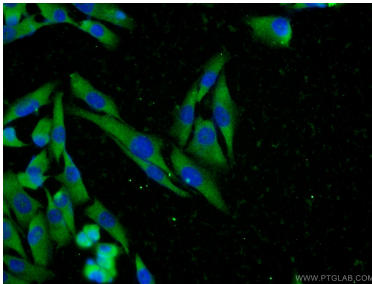
A375 cells were subjected to SDS PAGE followed by western blot with 25896-1-AP (MTR Antibody) at dilution of 1:600 incubated at room temperature for 1.5 hours.



Immunohistochemical analysis of paraffin-embedded human pancreas tissue slide using 25896-1-AP (MTR Antibody) at dilution of 1:50 (under 40x lens).



Immunohistochemical analysis of paraffin-embedded human pancreas tissue slide using 25896-1-AP (MTR Antibody) at dilution of 1:50 (under 10x lens).



Immunofluorescent analysis of A375 cells using 25896-1-AP (MTR antibody) at dilution of 1:50 and Alexa Fluor 488-conjugated AffiniPure Goat Anti-Rabbit IgG(H+L).