

For Research Use Only

CATSPERB Polyclonal antibody

Catalog Number: 26633-1-AP



Basic Information

Catalog Number:

26633-1-AP

Size:

800 µg/ml

Source:

Rabbit

Isotype:

IgG

Immunogen Catalog Number:

AG23393

GenBank Accession Number:

BC126214

GeneID (NCBI):

79820

UNIPROT ID:

Q9H7T0

Full Name:

cation channel, sperm-associated,
beta

Observed MW:

72 kDa

Purification Method:

Antigen affinity purification

Recommended Dilutions:

WB 1:500-1:1000

Applications

Tested Applications:

WB, ELISA

Species Specificity:

human, mouse

Positive Controls:

WB: LO2 cells, mouse liver tissue

Background Information

CATSPERB, also named as C14orf161 and CatSper-beta, is involved in sperm cell hyperactivation via its association with CATSPER1. CATSPERB has two isoforms with MW 127 kDa and 72 kDa.

Storage

Storage:

Store at -20°C. Stable for one year after shipment.

Storage Buffer:

PBS with 0.02% sodium azide and 50% glycerol pH 7.3.

Aliquoting is unnecessary for -20°C storage

For technical support and original validation data for this product please contact:

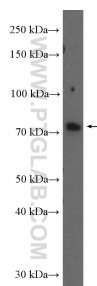
T: 4006900926

E: Proteintech-CN@ptglab.com

W: ptgcn.com

This product is exclusively available under Proteintech Group brand and is not available to purchase from any other manufacturer.

Selected Validation Data



L02 cells were subjected to SDS PAGE followed by western blot with 26633-1-AP (CATSPERB Antibody) at dilution of 1:600 incubated at room temperature for 1.5 hours.