

For Research Use Only

# YTHDF1 Polyclonal antibody

Catalog Number: 26787-1-AP **2 Publications**



## Basic Information

<b>Catalog Number:</b> 26787-1-AP	<b>GenBank Accession Number:</b> BC050284	<b>Purification Method:</b> Antigen affinity purification
<b>Size:</b> 300 µg/ml	<b>GeneID (NCBI):</b> 54915	<b>Recommended Dilutions:</b> WB 1:500-1:1000 IP 0.5-4.0 µg for 1.0-3.0 mg of total protein lysate
<b>Source:</b> Rabbit	<b>UNIPROT ID:</b> Q9BYJ9	
<b>Isotype:</b> IgG	<b>Full Name:</b> YTH domain family, member 1	
<b>Immunogen Catalog Number:</b> AG25347	<b>Calculated MW:</b> 559 aa, 61 kDa	
	<b>Observed MW:</b> 60 kDa	

## Applications

<b>Tested Applications:</b> IP, WB, ELISA	<b>Positive Controls:</b> WB : HepG2 cells, IP : HepG2 cells,
<b>Cited Applications:</b> IHC, WB	
<b>Species Specificity:</b> human	
<b>Cited Species:</b> human, mouse	

## Background Information

YTHDF1, also named YTH domain-containing family protein 1 or C20orf21, is a 559 amino acid protein, which localizes in the cytoplasm. YTHDF1 specifically recognizes and binds N6-methyladenosine (m6A)-containing mRNAs, and promotes mRNA translation efficiency. M6A is a modification present at the internal sites of mRNAs and some non-coding RNAs and plays a role in the efficiency of mRNA splicing, processing, and stability. YTHDF1 acts as a regulator of mRNA translation efficiency: promotes ribosome loading to m6A-containing mRNAs and interacts with translation initiation factors eIF3 (EIF3A or EIF3B) to facilitate translation initiation. YTHDF1 exists two isoforms and the calculated molecular weight of isoforms are 61 kDa and 21 kDa.

## Notable Publications

Author	Pubmed ID	Journal	Application
Xiaohui Bai	35939138	Cell Mol Neurobiol	WB,IHC
Yadan Fan	38112021	Cancer Med	WB

## Storage

**Storage:**  
Store at -20°C. Stable for one year after shipment.  
**Storage Buffer:**  
PBS with 0.02% sodium azide and 50% glycerol pH 7.3.  
Aliquoting is unnecessary for -20°C storage

For technical support and original validation data for this product please contact:

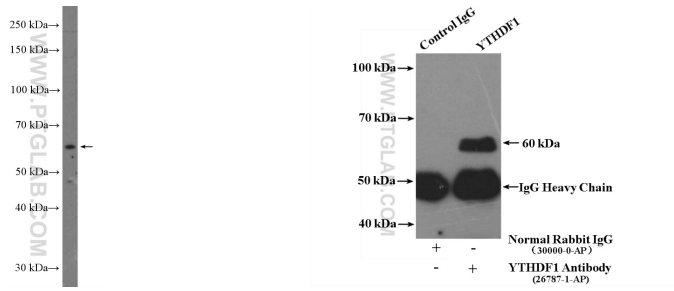
T: 4006900926

E: [Proteintech-CN@ptglab.com](mailto:Proteintech-CN@ptglab.com)

W: [ptgcn.com](http://ptgcn.com)

**This product is exclusively available under Proteintech Group brand and is not available to purchase from any other manufacturer.**

## Selected Validation Data



HepG2 cells were subjected to SDS PAGE followed by western blot with 26787-1-AP (YTHDF1 Antibody) at dilution of 1:600 incubated at room temperature for 1.5 hours.

IP result of anti-YTHDF1 (IP:26787-1-AP, 4ug; Detection:26787-1-AP 1:300) with HepG2 cells lysate 3200ug.