

For Research Use Only

# ISOC2 Polyclonal antibody

Catalog Number: 27082-1-AP



## Basic Information

<b>Catalog Number:</b> 27082-1-AP	<b>GenBank Accession Number:</b> BC017344	<b>Purification Method:</b> Antigen affinity purification
<b>Size:</b> 550 µg/ml	<b>GeneID (NCBI):</b> 79763	<b>Recommended Dilutions:</b> WB 1:1000-1:6000 IHC 1:100-1:400
<b>Source:</b> Rabbit	<b>UNIPROT ID:</b> Q96AB3	
<b>Isotype:</b> IgG	<b>Full Name:</b> isochorismatase domain containing 2	
<b>Immunogen Catalog Number:</b> AG23936	<b>Observed MW:</b> 28 kDa	

## Applications

### Tested Applications:

IHC, WB, ELISA

### Species Specificity:

human, mouse, rat

**Note-IHC: suggested antigen retrieval with TE buffer pH 9.0; (\*) Alternatively, antigen retrieval may be performed with citrate buffer pH 6.0**

### Positive Controls:

**WB:** LNCaP cells, mouse kidney tissue, mouse liver tissue, mouse testis tissue, rat testis tissue

**IHC:** human kidney tissue, human liver tissue

## Background Information

### Storage

#### Storage:

Store at -20°C. Stable for one year after shipment.

#### Storage Buffer:

PBS with 0.02% sodium azide and 50% glycerol pH 7.3.

Aliquoting is unnecessary for -20°C storage

For technical support and original validation data for this product please contact:

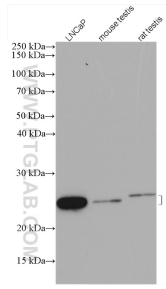
T: 4006900926

E: [Proteintech-CN@ptglab.com](mailto:Proteintech-CN@ptglab.com)

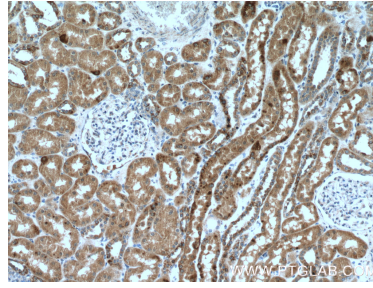
W: [ptgcn.com](http://ptgcn.com)

**This product is exclusively available under Proteintech Group brand and is not available to purchase from any other manufacturer.**

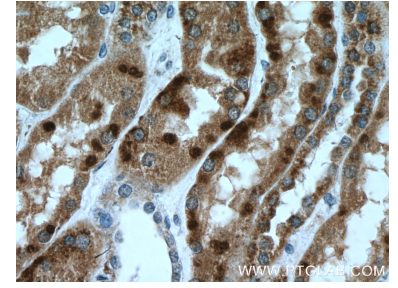
## Selected Validation Data



Various lysates were subjected to SDS PAGE followed by western blot with 27082-1-AP (ISOC2 antibody) at dilution of 1:3000 incubated at room temperature for 1.5 hours.



Immunohistochemical analysis of paraffin-embedded human kidney tissue slide using 27082-1-AP (ISOC2 Antibody) at dilution of 1:200 (under 10x lens).



Immunohistochemical analysis of paraffin-embedded human kidney tissue slide using 27082-1-AP (ISOC2 Antibody) at dilution of 1:200 (under 40x lens).