

For Research Use Only

# ATM Polyclonal antibody

Catalog Number: 27156-1-AP

Featured Product

31 Publications



## Basic Information

**Catalog Number:**

27156-1-AP

**Size:**

600 µg/ml

**Source:**

Rabbit

**Isotype:**

IgG

**Immunogen Catalog Number:**

AG25909

**GenBank Accession Number:**

BC137169

**GeneID (NCBI):**

472

**UNIPROT ID:**

Q13315

**Full Name:**

ataxia telangiectasia mutated

**Observed MW:**

310-350 kDa

**Purification Method:**

Antigen affinity purification

**Recommended Dilutions:**

WB 1:500-1:2000

IP 0.5-4.0 µg for 1.0-3.0 mg of total protein lysate

IHC 1:50-1:500

IF 1:200-1:800

## Applications

**Tested Applications:**

IF, IHC, IP, WB, ELISA

**Cited Applications:**

WB, IF, IHC, CHIP

**Species Specificity:**

human

**Cited Species:**

human, mouse

**Note-IHC: suggested antigen retrieval with TE buffer pH 9.0; (\*) Alternatively, antigen retrieval may be performed with citrate buffer pH 6.0**

**Positive Controls:**

WB : HEK-293 cells, HeLa cells, HepG2 cells

IP : HEK-293 cells,

IHC : human breast cancer tissue, human lung cancer tissue

IF : HeLa cells,

## Background Information

The ATM protein is a member of the phosphatidylinositol 3-kinase family of proteins that respond to DNA damage by phosphorylating key substrates involved in DNA repair and/or cell cycle control. It is involved in mitogenic signal transduction, meiotic recombination, detection of DNA damage, and cell cycle control.

## Notable Publications

Author	Pubmed ID	Journal	Application
Xin Wen	36249018	Front Oncol	WB
Yang Liang	36175705	Med Oncol	WB
Jianqing Liang	33110215	Cell Death Differ	WB

## Storage

**Storage:**

Store at -20°C. Stable for one year after shipment.

**Storage Buffer:**

PBS with 0.02% sodium azide and 50% glycerol pH 7.3.

Aliquoting is unnecessary for -20°C storage

For technical support and original validation data for this product please contact:

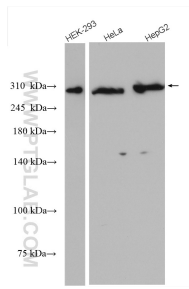
T: 4006900926

E: Proteintech-CN@ptglab.com

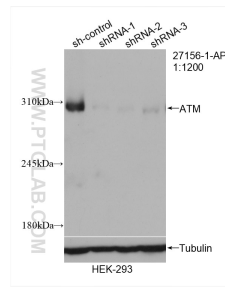
W: ptgcn.com

**This product is exclusively available under Proteintech Group brand and is not available to purchase from any other manufacturer.**

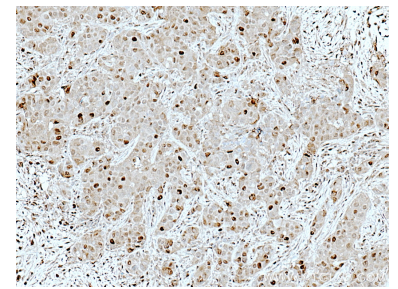
## Selected Validation Data



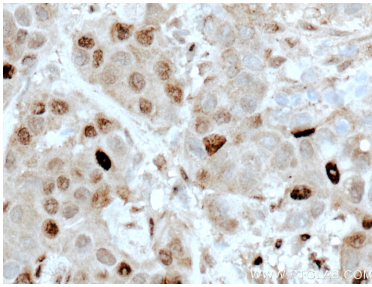
Various lysates were subjected to SDS PAGE followed by western blot with 27156-1-AP (ATM antibody) at dilution of 1:1000 incubated at room temperature for 1.5 hours.



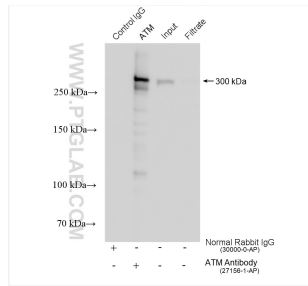
WB result of ATM antibody (27156-1-AP; 1:1200; incubated at room temperature for 1.5 hours) with sh-Control and sh-ATM transfected HEK-293 cells.



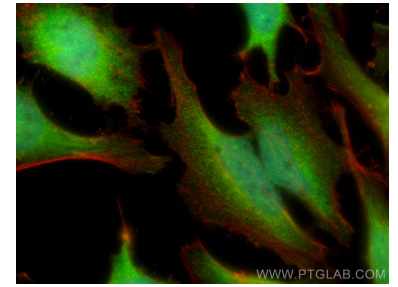
Immunohistochemical analysis of paraffin-embedded human breast cancer tissue slide using 27156-1-AP (ATM antibody) at dilution of 1:200 (under 10x lens. Heat mediated antigen retrieval with Tris-EDTA buffer (pH 9.0).



Immunohistochemical analysis of paraffin-embedded human breast cancer tissue slide using 27156-1-AP (ATM antibody) at dilution of 1:200 (under 40x lens. Heat mediated antigen retrieval with Tris-EDTA buffer (pH 9.0).



IP result of anti-ATM (IP:27156-1-AP, 4ug; Detection:27156-1-AP 1:800) with HEK-293 cells lysate 1480 ug.



Immunofluorescent analysis of (4% PFA) fixed HeLa cells using ATM antibody (27156-1-AP) at dilution of 1:400 and CoraLite@488-Conjugated AffiniPure Goat Anti-Rabbit IgG(H+L), CL594-phalloidin (red).