

For Research Use Only

FTO Polyclonal antibody

Catalog Number: 27226-1-AP

Featured Product

187 Publications



Basic Information

Catalog Number:

27226-1-AP

Concentration:

1000 ug/ml

Source:

Rabbit

Isotype:

IgG

Immunogen Catalog Number:

AG26095

GenBank Accession Number:

NM_001080432

GeneID (NCBI):

79068

UNIPROT ID:

Q9C0B1

Full Name:

fat mass and obesity associated

Calculated MW:

58 kDa

Observed MW:

58 kDa

Purification Method:

Antigen affinity purification

Recommended Dilutions:

WB: 1:1000-1:3000

IHC: 1:200-1:800

IF-P: 1:50-1:500

FC (Intra): 0.40 ug per 10⁶ cells in a 100 µl suspension

Applications

Tested Applications:

WB, IHC, IF-P, FC (Intra), ELISA

Cited Applications:

WB, IHC, IF, IP, CoIP, RIP

Species Specificity:

human

Cited Species:

human, mouse, rat, pig, chicken, goat

Note-IHC: suggested antigen retrieval with TE buffer pH 9.0; (*) Alternatively, antigen retrieval may be performed with citrate buffer pH 6.0

Positive Controls:

WB: A549 cells, MDA-MB-231 cells, Caco-2 cells, HEK-293 cells, HeLa cells, HEK-293T cells, SH-SY5Y cells

IHC: human liver cancer tissue, human breast cancer tissue, human colon tissue, human stomach cancer tissue

IF-P: human lymphoma tissue, human liver cancer tissue

FC (Intra): SH-SY5Y cells,

Background Information

Fat mass and obesity-associated protein (FTO) has efficient oxidative demethylation activity targeting the abundant N6-methyladenosine (m6A) residues in RNA in vitro. Variants in the FTO (fat mass and obesity associated) gene are associated with increased body mass index in humans.

Notable Publications

| Author | Pubmed ID | Journal | Application |
|-------------------|-----------|------------------|-------------|
| Kusuma Suphakhong | 36183833 | J Biol Chem | WB |
| Praveen K Dubey | 34581943 | Mol Cell Biochem | WB |
| Mingming Sun | 36232604 | Int J Mol Sci | WB |

Storage

Storage:

Store at -20°C. Stable for one year after shipment.

Storage Buffer:

PBS with 0.02% sodium azide and 50% glycerol, pH7.3

Aliquoting is unnecessary for -20°C storage

For technical support and original validation data for this product please contact:

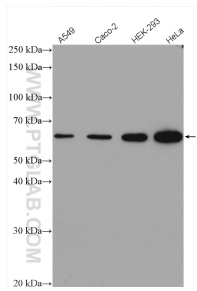
T: 4006900926

E: Proteintech-CN@ptglab.com

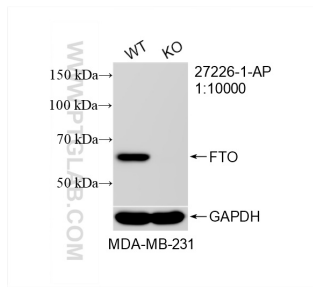
W: ptgcn.com

This product is exclusively available under Proteintech Group brand and is not available to purchase from any other manufacturer.

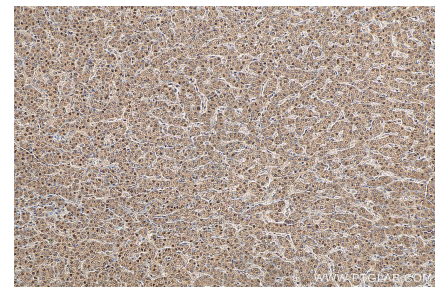
Selected Validation Data



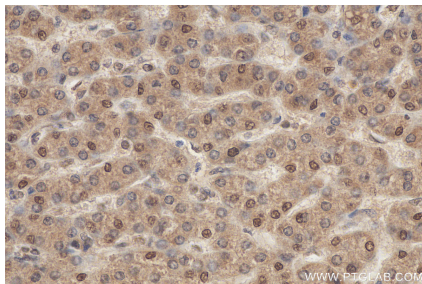
Various lysates were subjected to SDS PAGE followed by western blot with 27226-1-AP (FTO antibody) at dilution of 1:3000 incubated at room temperature for 1.5 hours.



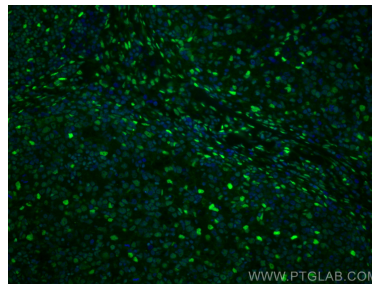
WB result of FTO antibody (27226-1-AP; 1:10000; room temperature for 1.5 hours) with wild-type and FTO knockout MDA-MB-231 cells.



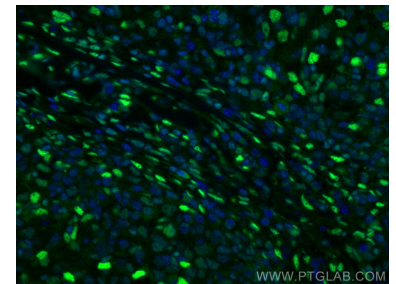
Immunohistochemical analysis of paraffin-embedded human liver cancer tissue slide using 27226-1-AP (FTO antibody) at dilution of 1:400 (under 10x lens). Heat mediated antigen retrieval with Tris-EDTA buffer (pH 9.0).



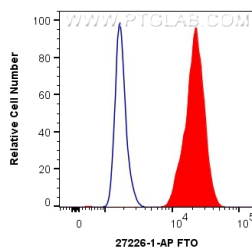
Immunohistochemical analysis of paraffin-embedded human liver cancer tissue slide using 27226-1-AP (FTO antibody) at dilution of 1:400 (under 40x lens). Heat mediated antigen retrieval with Tris-EDTA buffer (pH 9.0).



Immunofluorescent analysis of (4% PFA) fixed human lymphoma tissue using FTO antibody (27226-1-AP) at dilution of 1:200 and CoraLite®488-Conjugated AffiniPure Goat Anti-Rabbit IgG(H+L).



Immunofluorescent analysis of (4% PFA) fixed human lymphoma tissue using FTO antibody (27226-1-AP) at dilution of 1:200 and CoraLite®488-Conjugated AffiniPure Goat Anti-Rabbit IgG(H+L).



1X10⁶ SH-SY5Y cells were intracellularly stained with 0.4 ug Anti-Human FTO (27226-1-AP) and CoraLite®488-Conjugated AffiniPure Goat Anti-Rabbit IgG(H+L) at dilution 1:1000 (red), or 0.4 ug Isotype Control. Cells were fixed with 4% PFA and permeabilized with Flow Cytometry Perm Buffer (PF00011-C).