

For Research Use Only

# CYSLTR1 Polyclonal antibody

Catalog Number: 27372-1-AP **2 Publications**



## Basic Information

<b>Catalog Number:</b> 27372-1-AP	<b>GenBank Accession Number:</b> BC035750	<b>Purification Method:</b> Antigen affinity purification
<b>Size:</b> 300 µg/ml	<b>GeneID (NCBI):</b> 10800	<b>Recommended Dilutions:</b> WB 1:2000-1:16000
<b>Source:</b> Rabbit	<b>UNIPROT ID:</b> Q9Y271	
<b>Isotype:</b> IgG	<b>Full Name:</b> cysteinyl leukotriene receptor 1	
<b>Immunogen Catalog Number:</b> AG24961	<b>Calculated MW:</b> 39 kDa	
	<b>Observed MW:</b> 39 kDa	

## Applications

<b>Tested Applications:</b> WB, ELISA	<b>Positive Controls:</b> WB : rat heart tissue, mouse heart tissue
<b>Cited Applications:</b> IF, WB	
<b>Species Specificity:</b> human, mouse, rat	
<b>Cited Species:</b> human, rat	

## Background Information

### Notable Publications

Author	Pubmed ID	Journal	Application
Shuying Yu	31933824	Int J Clin Exp Pathol	WB
Susanne M Brunner	37211287	Exp Eye Res	IF

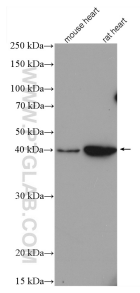
## Storage

**Storage:**  
Store at -20°C. Stable for one year after shipment.  
**Storage Buffer:**  
PBS with 0.02% sodium azide and 50% glycerol pH 7.3.  
Aliquoting is unnecessary for -20°C storage

For technical support and original validation data for this product please contact:  
T: 4006900926 E: Proteintech-CN@ptglab.com W: ptgcn.com

This product is exclusively available under Proteintech Group brand and is not available to purchase from any other manufacturer.

## Selected Validation Data



Various lysates were subjected to SDS PAGE followed by western blot with 27372-1-AP (CYSLTR1 antibody) at dilution of 1:8000 incubated at room temperature for 1.5 hours.