

For Research Use Only

MRPL4 Polyclonal antibody

Catalog Number: 27484-1-AP

Featured Product

6 Publications



Basic Information

Catalog Number:

27484-1-AP

Concentration:

267 ug/ml

Source:

Rabbit

Isotype:

IgG

Immunogen Catalog Number:

AG26568

GenBank Accession Number:

BC000756

GeneID (NCBI):

51073

UNIPROT ID:

Q9BYD3

Full Name:

mitochondrial ribosomal protein L4

Calculated MW:

35 kDa

Observed MW:

36 kDa

Purification Method:

Antigen affinity purification

Recommended Dilutions:

WB: 1:10000-1:40000

IHC: 1:50-1:500

IF/ICC: 1:200-1:800

Applications

Tested Applications:

WB, IHC, IF/ICC, ELISA

Cited Applications:

WB, IHC

Species Specificity:

human

Cited Species:

human

Note-IHC: suggested antigen retrieval with TE buffer pH 9.0; (*) Alternatively, antigen retrieval may be performed with citrate buffer pH 6.0

Positive Controls:

WB : HL-60 cells,

IHC : human liver tissue,

IF/ICC : HepG2 cells,

Background Information

Notable Publications

Author	Pubmed ID	Journal	Application
Elizabeth A Perry	33462515	Nat Metab	WB
Damien Jeandard	36537202	Nucleic Acids Res	WB
Xu Wang	39557952	Sci Rep	IHC

Storage

Storage:

Store at -20°C. Stable for one year after shipment.

Storage Buffer:

PBS with 0.02% sodium azide and 50% glycerol, pH7.3

Aliquoting is unnecessary for -20°C storage

For technical support and original validation data for this product please contact:

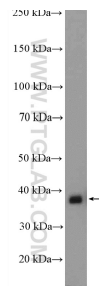
T: 4006900926

E: Proteintech-CN@ptglab.com

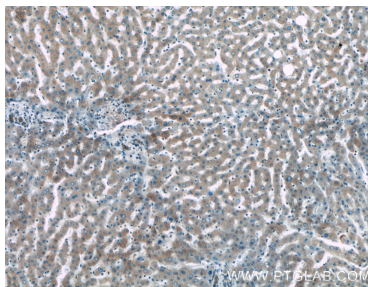
W: ptgcn.com

This product is exclusively available under Proteintech Group brand and is not available to purchase from any other manufacturer.

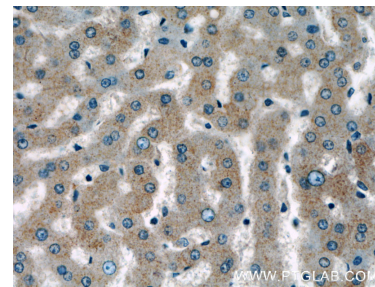
Selected Validation Data



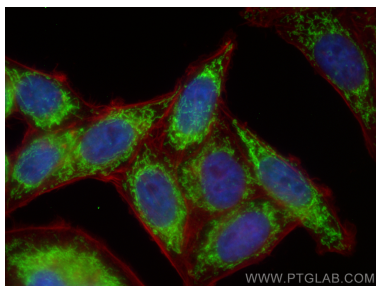
HL-60 cells were subjected to SDS PAGE followed by western blot with 27484-1-AP (MRPL4 antibody) at dilution of 1:20000 incubated at room temperature for 1.5 hours.



Immunohistochemical analysis of paraffin-embedded human liver tissue slide using 27484-1-AP (MRPL4 antibody) at dilution of 1:200 (under 10x lens).



Immunohistochemical analysis of paraffin-embedded human liver tissue slide using 27484-1-AP (MRPL4 antibody) at dilution of 1:200 (under 40x lens).



Immunofluorescent analysis of (4% PFA) fixed HepG2 cells using MRPL4 antibody (27484-1-AP) at dilution of 1:400 and CoraLite® 488-Conjugated Goat Anti-Rabbit IgG(H+L) (SA00013-2), CL594-Phalloidin (red).