

TREM2 Polyclonal antibody

Catalog Number: 27599-1-AP

6 Publications

Basic Information

Catalog Number:

27599-1-AP

Size:

550 µg/ml

Source:

Rabbit

Isotype:

IgG

Immunogen Catalog Number:

AG26319

GenBank Accession Number:

BC032362

GeneID (NCBI):

54209

UNIPROT ID:

Q9NZC2

Full Name:

triggering receptor expressed on myeloid cells 2

Calculated MW:

222 aa, 25 kDa

Observed MW:

38 kDa

Purification Method:

Antigen affinity purification

Recommended Dilutions:

WB 1:500-1:2000

Applications

Tested Applications:

FC, WB, ELISA

Cited Applications:

WB, IF, IHC

Species Specificity:

Human, mouse

Cited Species:

human, mouse

Positive Controls:

WB : MKN-45 cells, THP-1 cells

Background Information

TREM2 (triggering receptor expressed on myeloid cells 2) is a cell surface receptor belongs to TREM family that is expressed on osteoclast, dendritic cells, macrophages, nature killers, neutrophils and microglia (PMID: 19302484). TREM2 is localized predominantly in the Golgi complex, but also shuttles to and from the cell surface in endocytic and exocytic vesicles (PMID: 16675145). TREM2 associates with DAP12 to initiate the intracellular signalling cascade via an immunoreceptor tyrosine-based activation motif (ITAM) domain and tyrosine-kinases (PMID: 23977213).

Notable Publications

Author	Pubmed ID	Journal	Application
Wen-Jin Chen	35017463	Cell Death Dis	IF
Nannan Zhang	38453910	Cell Death Dis	WB, IF
Jingjing Shi	37923002	Brain Res	WB

Storage

Storage:

Store at -20°C. Stable for one year after shipment.

Storage Buffer:

PBS with 0.02% sodium azide and 50% glycerol pH 7.3.

Aliquoting is unnecessary for -20°C storage

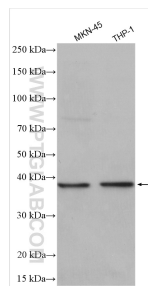
For technical support and original validation data for this product please contact:

T: 4006900926

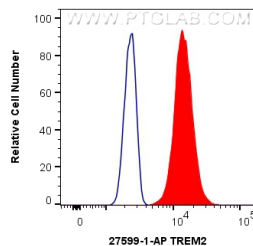
E: Proteintech-CN@ptglab.comW: ptgcn.com

This product is exclusively available under Proteintech Group brand and is not available to purchase from any other manufacturer.

Selected Validation Data



Various lysates were subjected to SDS PAGE followed by western blot with 27599-1-AP (TREM2 antibody) at dilution of 1:1000 incubated at room temperature for 1.5 hours.



1×10^6 BV-2 cells were intracellularly stained with 0.4 ug Anti-Human TREM2 (27599-1-AP) and CoraLite® 488-Conjugated AffiniPure Goat Anti-Rabbit IgG(H+L) at dilution 1:1000 (red), or 0.4 ug Isotype Control. Cells were fixed with 4% PFA and permeabilized with Flow Cytometry Perm Buffer (PF00011-C).