

# CRTC1 Polyclonal antibody

Catalog Number: 27647-1-AP

2 Publications

## Basic Information

**Catalog Number:**

27647-1-AP

**Size:**

900 µg/ml

**Source:**

Rabbit

**Isotype:**

IgG

**Immunogen Catalog Number:**

AG26494

**GenBank Accession Number:**

BC017075

**GeneID (NCBI):**

23373

**UNIPROT ID:**

Q6UUV9

**Full Name:**CREB regulated transcription  
coactivator 1**Calculated MW:**

67 kDa

**Observed MW:**

68-75 kDa

**Purification Method:**

Antigen affinity purification

**Recommended Dilutions:**

WB 1:500-1:2000

## Applications

**Tested Applications:**

WB, ELISA

**Cited Applications:**

WB

**Species Specificity:**

Human, mouse

**Cited Species:**

human, rat

**Positive Controls:**

WB: Neuro-2a cells, HeLa cells, HEK-293T cells

## Background Information

CRTC1, also named as Transducer of CREB protein 1, is a 634 amino acid protein, which belongs to the TORC family. CRTC1 is highly expressed in adult and fetal brain and is low expressed in other tissues such as heart, spleen, lung, skeletal muscle, salivary gland, ovary and kidney. CRTC1 localizes in Cytoplasm when is phosphorylated by SIK or AMPK and when sequestered by 14-3-3 proteins (PubMed:16817901). it translocates to the nucleus on Ser-151 dephosphorylation, instigated by a number of factors including calcium ion and cAMP levels. CRTC1 as a Transcriptional coactivator for CREB1 which activates transcription through both consensus and variant cAMP response element (CRE) sites. The calculated molecular weight of CRTC1 is 68 kDa, but the modified protein is about 70-75 kDa.

## Notable Publications

Author	Pubmed ID	Journal	Application
Lei Qiang	32866426	Autophagy	WB
Wanyu Tu	37783262	Brain Res	WB

## Storage

**Storage:**

Store at -20°C. Stable for one year after shipment.

**Storage Buffer:**

PBS with 0.02% sodium azide and 50% glycerol pH 7.3.

Aliquoting is unnecessary for -20°C storage

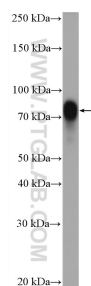
For technical support and original validation data for this product please contact:

T: 4006900926

E: [Proteintech-CN@ptglab.com](mailto:Proteintech-CN@ptglab.com)W: [ptgcn.com](http://ptgcn.com)

This product is exclusively available under Proteintech Group brand and is not available to purchase from any other manufacturer.

## Selected Validation Data



Neuro-2a cells were subjected to SDS PAGE followed by western blot with 27647-1-AP (CRTC1 antibody) at dilution of 1:1000 incubated at room temperature for 1.5 hours.