

For Research Use Only

PRRC1 Polyclonal antibody

Catalog Number: 27887-1-AP



Basic Information

Catalog Number: 27887-1-AP	GenBank Accession Number: BC017066	Purification Method: Antigen affinity purification
Size: 400 µg/ml	GeneID (NCBI): 133619	Recommended Dilutions: WB 1:500-1:3000 IHC 1:50-1:500
Source: Rabbit	UNIPROT ID: Q96M27	
Isotype: IgG	Full Name: proline-rich coiled-coil 1	
Immunogen Catalog Number: AG27349	Calculated MW: 445 aa, 47 kDa	
	Observed MW: 50 kDa	

Applications

Tested Applications: IHC, WB, ELISA	Positive Controls: WB : HeLa cells, mouse heart tissue IHC : human pancreas tissue,
Species Specificity: Human, Mouse	
Note-IHC: suggested antigen retrieval with TE buffer pH 9.0; (*) Alternatively, antigen retrieval may be performed with citrate buffer pH 6.0	

Background Information

Storage

Storage:
Store at -20°C. Stable for one year after shipment.
Storage Buffer:
PBS with 0.02% sodium azide and 50% glycerol pH 7.3.
Aliquoting is unnecessary for -20°C storage

For technical support and original validation data for this product please contact:

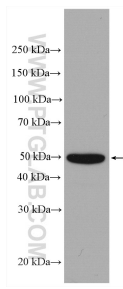
T: 4006900926

E: Proteintech-CN@ptglab.com

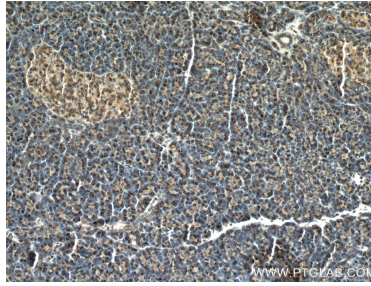
W: ptgcn.com

This product is exclusively available under Proteintech Group brand and is not available to purchase from any other manufacturer.

Selected Validation Data



HeLa cells were subjected to SDS PAGE followed by western blot with 27887-1-AP (PRRC1 antibody) at dilution of 1:2500 incubated at room temperature for 1.5 hours.



Immunohistochemical analysis of paraffin-embedded human pancreas tissue slide using 27887-1-AP (PRRC1 antibody) at dilution of 1:200 (under 10x lens).