

For Research Use Only

AKT2 Polyclonal antibody

Catalog Number: 28113-1-AP **1 Publications**



Basic Information

Catalog Number: 28113-1-AP	GenBank Accession Number: BC120994	Purification Method: Antigen affinity purification
Size: 550 µg/ml	GeneID (NCBI): 208	Recommended Dilutions: WB 1:500-1:1000
Source: Rabbit	UNIPROT ID: P31751	IHC 1:50-1:500
Isotype: IgG	Full Name: v-akt murine thymoma viral oncogene homolog 2	IF 1:50-1:500
Immunogen Catalog Number: AG27005	Observed MW: 56 kDa	

Applications

Tested Applications: FC, IF/ICC, IHC, WB, ELISA	Positive Controls: WB : NIH/3T3 cells, mouse liver tissue
Cited Applications: WB	IHC : human liver tissue,
Species Specificity: Human, mouse	IF : NIH/3T3 cells,
Cited Species: human	

Note-IHC: suggested antigen retrieval with TE buffer pH 9.0; (*) Alternatively, antigen retrieval may be performed with citrate buffer pH 6.0

Background Information

AKT2 is one of 3 closely related serine/threonine-protein kinases (AKT1, AKT2 and AKT3) called the AKT kinase, and which regulate many processes including metabolism, proliferation, cell survival, growth and angiogenesis and their activation has been observed in a wide variety of cancers. AKT2 is mainly involved in cancer cell survival, apoptosis inhibition, migration and invasion (PMID:21979951). Defects in AKT2 are a cause of susceptibility to breast cancer (BC). AKT2 promotes metastasis of tumor cells without affecting the latency of tumor development. And defects in AKT2 are a cause of non-insulin-dependent diabetes mellitus (NIDDM) and hypoinsulinemic hypoglycemia with hemihypertrophy (HIHGHH). The full length protein has four glycosylation sites.

Notable Publications

Author	Pubmed ID	Journal	Application
Zhi-Da Zhang	35219877	Int J Biochem Cell Biol	WB

Storage

Storage:
Store at -20°C. Stable for one year after shipment.
Storage Buffer:
PBS with 0.02% sodium azide and 50% glycerol pH 7.3.
Aliquoting is unnecessary for -20°C storage

For technical support and original validation data for this product please contact:

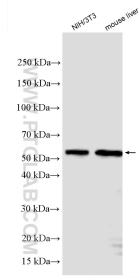
T: 4006900926

E: Proteintech-CN@ptglab.com

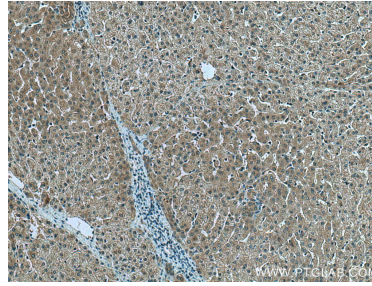
W: ptgcn.com

This product is exclusively available under Proteintech Group brand and is not available to purchase from any other manufacturer.

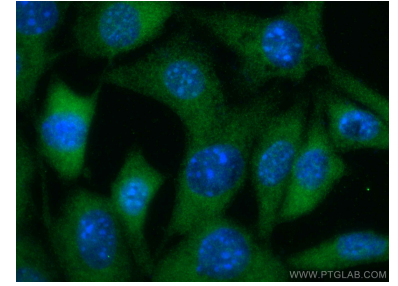
Selected Validation Data



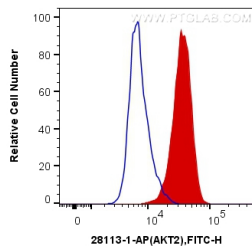
Various lysates were subjected to SDS PAGE followed by western blot with 28113-1-AP (AKT2 antibody) at dilution of 1:600 incubated at room temperature for 1.5 hours.



Immunohistochemical analysis of paraffin-embedded human liver tissue slide using 28113-1-AP (AKT2 antibody) at dilution of 1:200 (under 10x lens). Heat mediated antigen retrieval with Tris-EDTA buffer (pH 9.0).



Immunofluorescent analysis of (-20°C Ethanol) fixed NIH/3T3 cells using AKT2 antibody (28113-1-AP) at dilution of 1:100 and CoraLite®488-Conjugated AffiniPure Goat Anti-Rabbit IgG(H+L).



1X10⁶ NIH/3T3 cells were intracellularly stained with 0.4 ug Anti-Human AKT2 (28113-1-AP) and CoraLite®488-Conjugated AffiniPure Goat Anti-Rabbit IgG(H+L) at dilution 1:1000 (red), or 0.4 ug Control Antibody. Cells were fixed with 4% PFA and permeabilized with Flow Cytometry Perm Buffer (PF00011-C).