

For Research Use Only

CENPE Polyclonal antibody

Catalog Number: 28142-1-AP **5 Publications**



Basic Information

Catalog Number: 28142-1-AP	GenBank Accession Number: NM_001286734	Purification Method: Antigen affinity purification
Size: 550 µg/ml	GeneID (NCBI): 1062	Recommended Dilutions: WB 1:1000-1:4000
Source: Rabbit	UNIPROT ID: Q02224	
Isotype: IgG	Full Name: centromere protein E, 312kDa	
Immunogen Catalog Number: AG27230	Calculated MW: 316 kDa	
	Observed MW: 300-316 kDa	

Applications

Tested Applications: WB, ELISA	Positive Controls: WB : HEK-293 cells, HeLa cells, HepG2 cells
Cited Applications: IHC, WB	
Species Specificity: Human	
Cited Species: human, mouse	

Background Information

Notable Publications

Author	Pubmed ID	Journal	Application
Xishan Li	32509165	Am J Transl Res	WB
Zhen-Yu She	35680098	Biochim Biophys Acta Mol Cell Res	WB
Xueqiang Zhu	30716092	PLoS One	IHC

Storage

Storage:
Store at -20°C. Stable for one year after shipment.
Storage Buffer:
PBS with 0.02% sodium azide and 50% glycerol pH 7.3.
Aliquoting is unnecessary for -20°C storage

For technical support and original validation data for this product please contact:

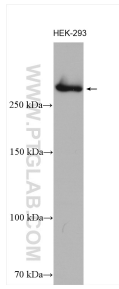
T: 4006900926

E: Proteintech-CN@ptglab.com

W: ptgcn.com

This product is exclusively available under Proteintech Group brand and is not available to purchase from any other manufacturer.

Selected Validation Data



HEK-293 cells lysate were subjected to SDS PAGE followed by western blot with 28142-1-AP (CENPE antibody) at dilution of 1:2000 incubated at room temperature for 1.5 hours.